

① Presentation

KAWNEER AN ARCONIC COMPANY

555 Guthridge Ct.
Technology Park/Atlanta
Norcross, GA 30092 USA
Tel: +1 770 449 5555



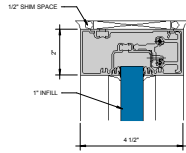
① Basic Wall Example
1 1/2" = 1'-0"



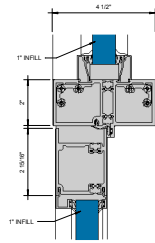
② Section
1 1/2" = 1'-0"

KAWNEER AN ARCONIC COMPANY

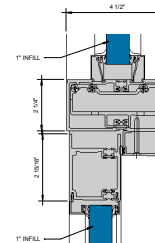
555 Guthridge Ct.
Technology Park/Atlanta
Norcross, GA 30092 USA
Tel: +1 770 449 5555



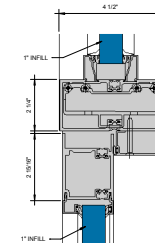
① TRANSOM HEAD - 1" INFILL
6" = 1'-0"



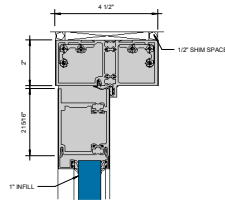
② TRANSOM BAR - 1" INFILL
6" = 1'-0"



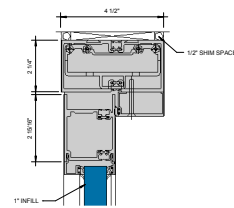
③ TRANSOM BAR - 1" INFILL
6" = 1'-0"



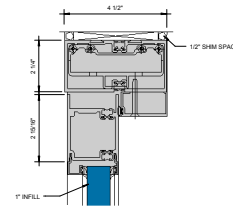
④ TRANSOM BAR - 1" INFILL
6" = 1'-0"



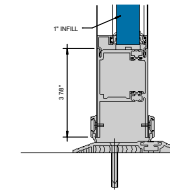
⑤ DOOR HEADER - 1" INFILL
6" = 1'-0"



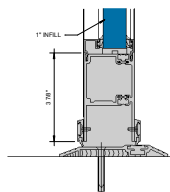
⑥ DOOR HEADER - 1" INFILL
6" = 1'-0"



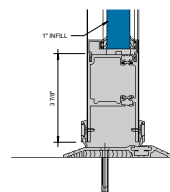
⑦ DOOR HEADER - 1" INFILL
6" = 1'-0"



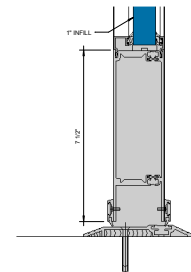
⑧ BOTTOM RAIL - 1" INFILL
6" = 1'-0"



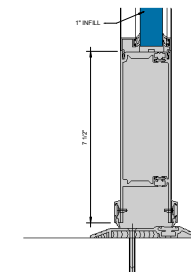
⑨ BOTTOM RAIL - 1" INFILL
6" = 1'-0"



⑩ BOTTOM RAIL - 1" INFILL
6" = 1'-0"



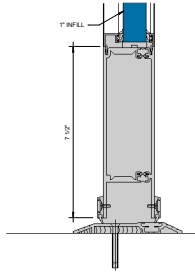
⑪ OPTIONAL BOTTOM RAIL - 1" INFILL
6" = 1'-0"



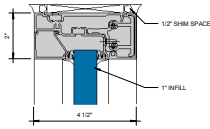
⑫ OPTIONAL BOTTOM RAIL - 1" INFILL
6" = 1'-0"

KAWNEER AN ARCONIC COMPANY

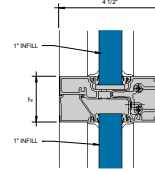
555 Guthridge Ct.
Technology Park/Atlanta
Norcross, GA 30092 USA
Tel: +1 770 449 5555



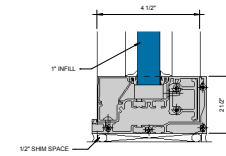
OPTIONAL BOTTOM RAIL - 1" INFILL
6" = 1'-0"



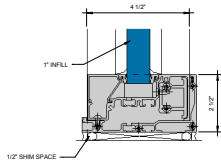
HEAD - 1" INFILL
6" = 1'-0"



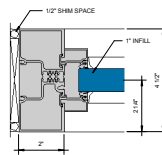
HORIZONTAL - 1" INFILL
6" = 1'-0"



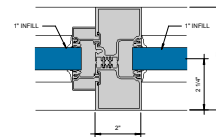
SILL WITH SEALANT OPTION - 1" INFILL
6" = 1'-0"



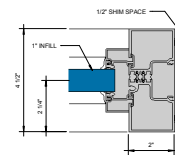
SILL WITH SEALANT & GASKET OPTION - 1" INFILL
6" = 1'-0"



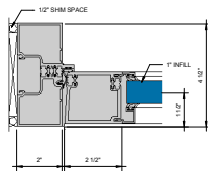
POCKET INSERT AT TRANSOM - 1" INFILL
6" = 1'-0"



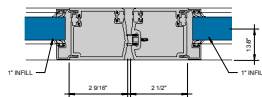
POCKET INSERT AT TRANSOM - 1" INFILL
6" = 1'-0"



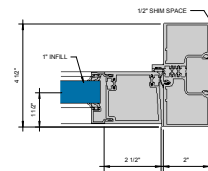
POCKET INSERT AT TRANSOM - 1" INFILL
6" = 1'-0"



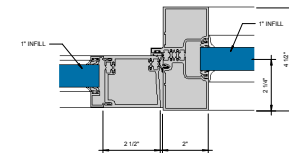
LOCKING HINGE STILE - 1" INFILL
6" = 1'-0"



MEETING STILE - 1" INFILL
6" = 1'-0"



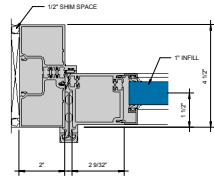
LOCKING HINGE STILE - 1" INFILL
6" = 1'-0"



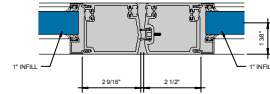
COG STILE - 1" INFILL
6" = 1'-0"

KAWNEER AN ARCONIC COMPANY

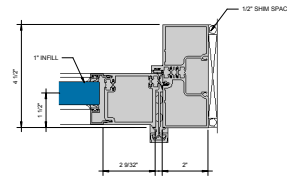
555 Guthridge Ct.
Technology Park/Atlanta
Norcross, GA 30092 USA
Tel: +1 770 449 5555



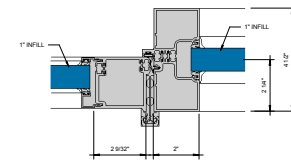
① CGH STILE - 1" INFILL
Ø = 1'-0"



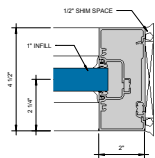
② MEETING STILE - 1" INFILL
Ø = 1'-0"



③ CGH STILE - 1" INFILL
Ø = 1'-0"



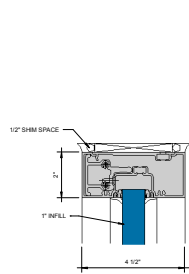
④ CGH STILE W/SIDELITE - 1" INFILL
Ø = 1'-0"



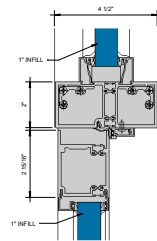
⑤ JAMB - 1" INFILL
Ø = 1'-0"

KAWNEER AN ARCONIC COMPANY

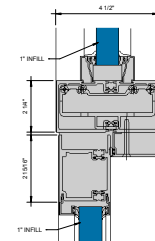
555 Guthridge Ct.
Technology Park/Atlanta
Norcross, GA 30092 USA
Tel: +1 770 449 5555



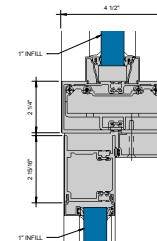
① TRANSOM HEAD - 1" INFILL
Ø = 1'-0"



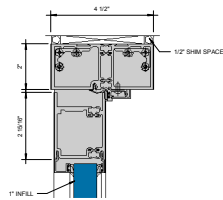
② TRANSOM BAR - 1" INFILL
Ø = 1'-0"



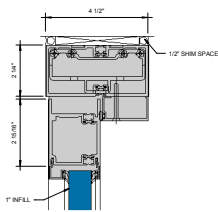
③ TRANSOM BAR - 1" INFILL
Ø = 1'-0"



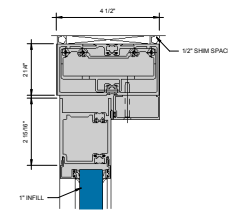
④ TRANSOM BAR - 1" INFILL
Ø = 1'-0"



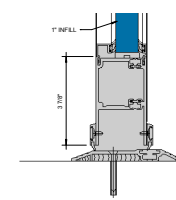
⑤ DOOR HEADER - 1" INFILL
Ø = 1'-0"



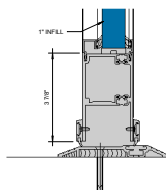
⑥ DOOR HEADER - 1" INFILL
Ø = 1'-0"



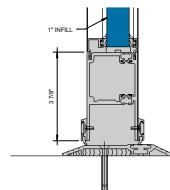
⑦ DOOR HEADER - 1" INFILL
Ø = 1'-0"



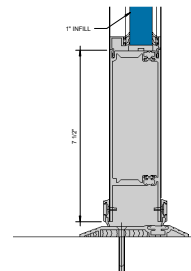
⑧ BOTTOM RAIL - 1" INFILL
Ø = 1'-0"



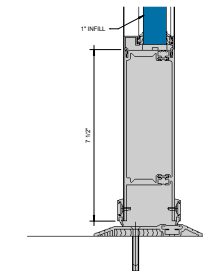
⑨ BOTTOM RAIL - 1" INFILL
Ø = 1'-0"



⑩ BOTTOM RAIL - 1" INFILL
Ø = 1'-0"



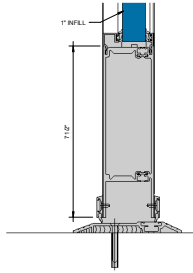
⑪ OPTIONAL BOTTOM RAIL - 1" INFILL
Ø = 1'-0"



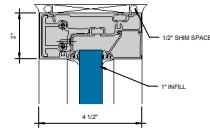
⑫ OPTIONAL BOTTOM RAIL - 1" INFILL
Ø = 1'-0"

KAWNEER AN ARCONIC COMPANY

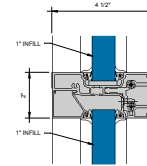
555 Guthridge Ct.
Technology Park/Atlanta
Norcross, GA 30092 USA
Tel: +1 770 449 5555



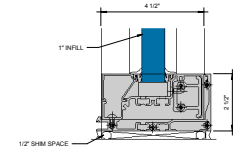
OPTIONAL BOTTOM RAIL - 1" INFILL
6" = 1'-0"



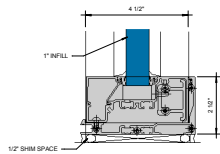
HEAD - 1" INFILL
6" = 1'-0"



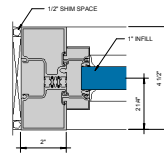
HORIZONTAL - 1" INFILL
6" = 1'-0"



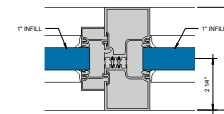
SILL WITH SEALANT OPTION - 1" INFILL
6" = 1'-0"



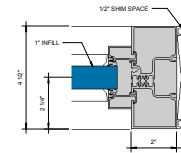
SILL WITH SEALANT & GASKET OPTION - 1" INFILL
6" = 1'-0"



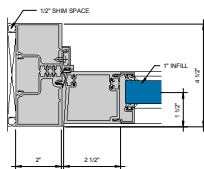
POCKET INSERT AT TRANSOM - 1" INFILL
6" = 1'-0"



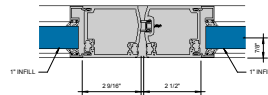
POCKET INSERT AT TRANSOM WIDELITE - 1" INFILL
6" = 1'-0"



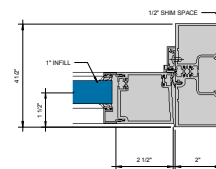
POCKET INSERT AT TRANSOM WIDELITE - 1" INFILL
6" = 1'-0"



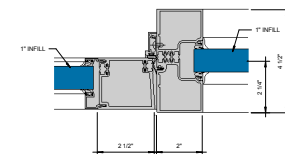
LOCKHINGE STILE - 1" INFILL
6" = 1'-0"



MEETING STILE - 1" INFILL
6" = 1'-0"



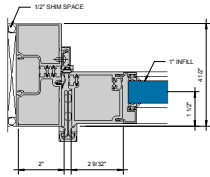
LOCKHINGE STILE - 1" INFILL
6" = 1'-0"



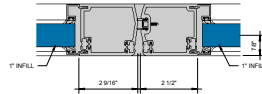
LOCKHINGE STILE WIDELITE - 1" INFILL
6" = 1'-0"

KAWNEER AN ARCONIC COMPANY

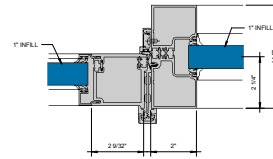
555 Guthridge Ct.
Technology Park/Atlanta
Norcross, GA 30092 USA
Tel: +1 770 449 5555



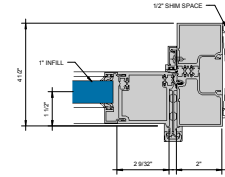
① CGH STILE - 1" INFILL
6" x 1-1/2"



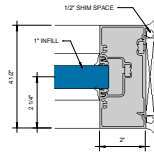
② MEETING STILE - 1" INFILL
6" x 1-1/2"



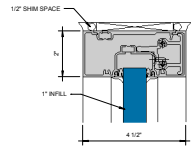
③ LOCK/ HINGE STILE W/SIDELITE 1" INFILL
6" x 1-1/2"



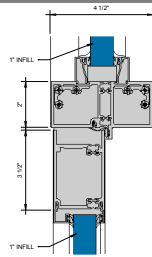
④ CGH STILE - 1" INFILL
6" x 1-1/2"



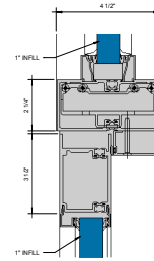
⑤ JAMB - 1" INFILL
6" x 1-1/2"



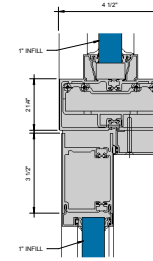
① TRANSOM HEAD - 1" INFILL
6" = 1'-0"



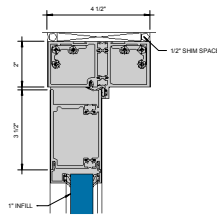
② TRANSOM BAR - 1" INFILL
6" = 1'-0"



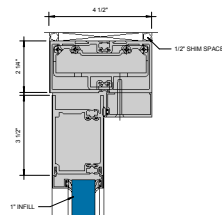
③ TRANSOM BAR - 1" INFILL
6" = 1'-0"



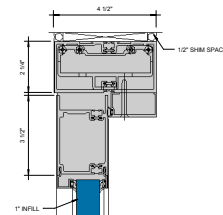
④ TRANSOM BAR - 1" INFILL
6" = 1'-0"



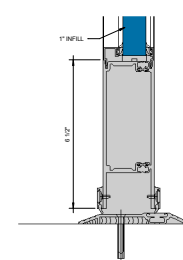
⑤ DOOR HEADER - 1" INFILL
6" = 1'-0"



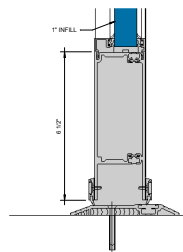
⑥ DOOR HEADER - 1" INFILL
6" = 1'-0"



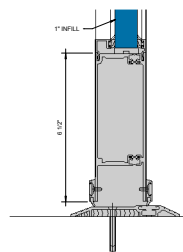
⑦ DOOR HEADER - 1" INFILL
6" = 1'-0"



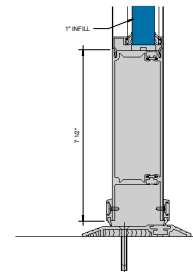
⑧ BOTTOM RAIL - 1" INFILL
6" = 1'-0"



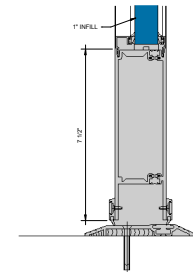
⑨ BOTTOM RAIL - 1" INFILL
6" = 1'-0"



⑩ BOTTOM RAIL - 1" INFILL
6" = 1'-0"



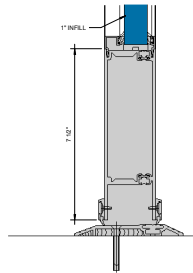
⑪ OPTIONAL BOTTOM RAIL - 1" INFILL
6" = 1'-0"



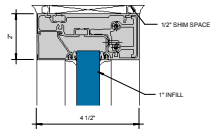
⑫ OPTIONAL BOTTOM RAIL - 1" INFILL
6" = 1'-0"

KAWNEER AN ARCONIC COMPANY

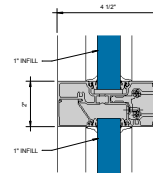
555 Guthridge Ct.
Technology Park/Atlanta
Norcross, GA 30092 USA
Tel: +1 770 449 5555



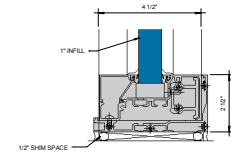
OPTIONAL BOTTOM RAIL - 1" INFILL
6" = 1'-0"



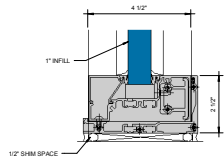
HEAD - 1" INFILL
6" = 1'-0"



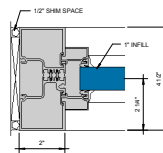
HORIZONTAL - 1" INFILL
6" = 1'-0"



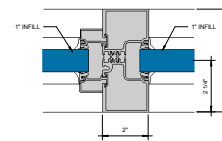
SILL WITH SEALANT OPTION - 1" INFILL
6" = 1'-0"



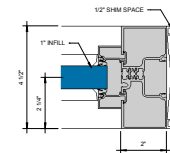
SILL WITH SEALANT & GASKET OPTION - 1" INFILL
6" = 1'-0"



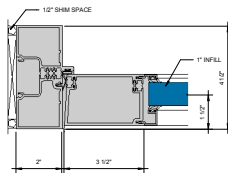
POCKET INSERT AT TRANSOM - 1" INFILL
6" = 1'-0"



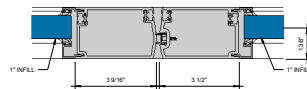
POCKET INSERT AT TRANSOM WIDELITE - 1" INFILL
6" = 1'-0"



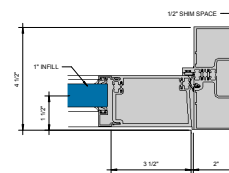
POCKET INSERT AT TRANSOM WIDELITE - 1" INFILL
6" = 1'-0"



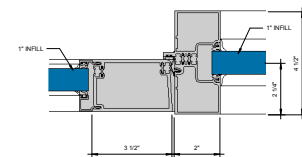
LOCKING HINGE STILE - 1" INFILL
6" = 1'-0"



MEETING STILE - 1" INFILL
6" = 1'-0"



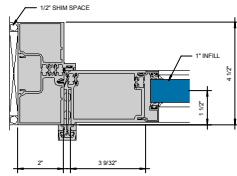
LOCKING HINGE STILE - 1" INFILL
6" = 1'-0"



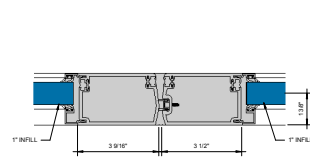
LOCKING HINGE STILE WIDELITE - 1" INFILL
6" = 1'-0"

KAWNEER AN ARCONIC COMPANY

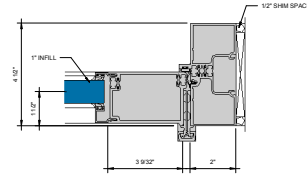
555 Guthridge Ct.
Technology Park/Atlanta
Norcross, GA 30092 USA
Tel: +1 770 449 5555



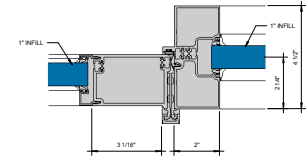
① CGH STILE - 1" INFILL
6" = 1'-0"



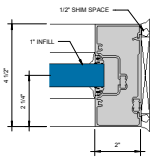
② MEETING STILE - 1" INFILL
6" = 1'-0"



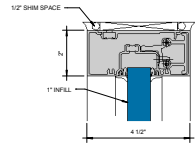
③ CGH STILE - 1" INFILL
6" = 1'-0"



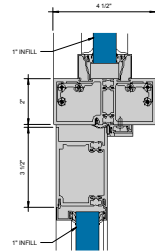
④ CGH STILE W/SIDELITE - 1" INFILL
6" = 1'-0"



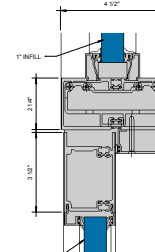
⑤ JAMB - 1" INFILL
6" = 1'-0"



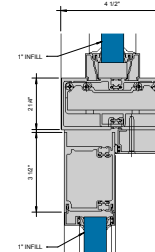
① TRANSOM HEAD - 1" INFILL
6" = 1'-0"



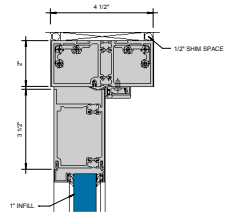
② TRANSOM BAR - 1" INFILL
6" = 1'-0"



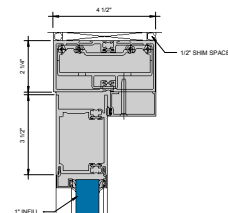
③ TRANSOM BAR - 1" INFILL
6" = 1'-0"



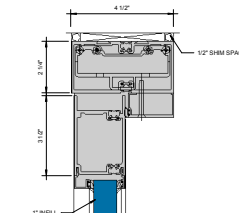
④ TRANSOM BAR - 1" INFILL
6" = 1'-0"



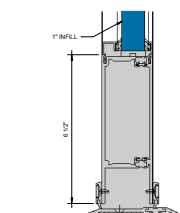
⑤ DOOR HEADER - 1" INFILL
6" = 1'-0"



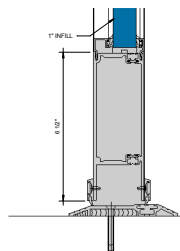
⑥ DOOR HEADER - 1" INFILL
6" = 1'-0"



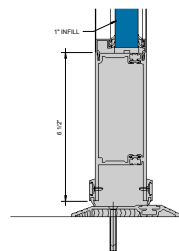
⑦ DOOR HEADER - 1" INFILL
6" = 1'-0"



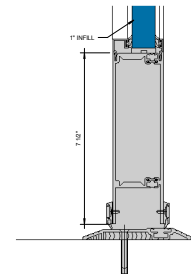
⑧ BOTTOM RAIL - 1" INFILL
6" = 1'-0"



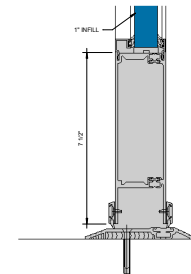
⑨ BOTTOM RAIL - 1" INFILL
6" = 1'-0"



⑩ BOTTOM RAIL - 1" INFILL
6" = 1'-0"



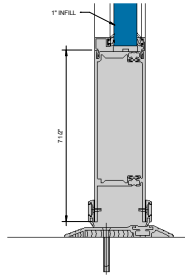
⑪ OPTIONAL BOTTOM RAIL - 1" INFILL
6" = 1'-0"



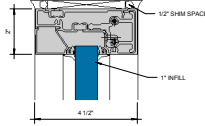
⑫ OPTIONAL BOTTOM RAIL - 1" INFILL
6" = 1'-0"

KAWNEER AN ARCONIC COMPANY

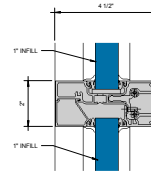
555 Guthridge Ct.
Technology Park/Atlanta
Norcross, GA 30092 USA
Tel: +1 770 449 5555



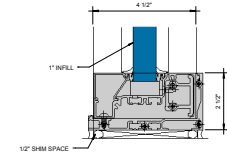
OPTIONAL BOTTOM RAIL - 1" INFILL
6" = 1'-0"



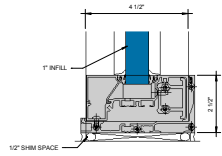
HEAD - 1" INFILL
6" = 1'-0"



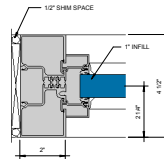
HORIZONTAL - 1" INFILL
6" = 1'-0"



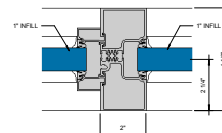
SILL WITH SEALANT OPTION - 1" INFILL
6" = 1'-0"



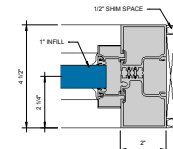
SILL WITH SEALANT & GASKET OPTION - 1" INFILL
6" = 1'-0"



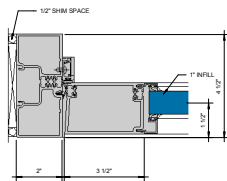
POCKET INSERT AT TRANSOM - 1" INFILL
6" = 1'-0"



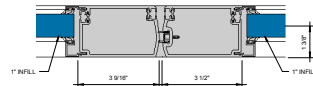
POCKET INSERT AT TRANSOM W/SIDELITE - 1" INFILL
6" = 1'-0"



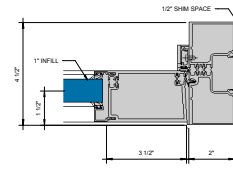
POCKET INSERT AT TRANSOM W/SIDELITE - 1" INFILL
6" = 1'-0"



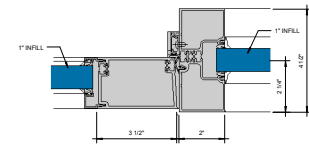
LOCKING STILE - 1" INFILL
6" = 1'-0"



MEETING STILE - 1" INFILL
6" = 1'-0"



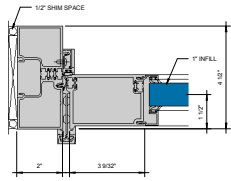
LOCKING STILE - 1" INFILL
6" = 1'-0"



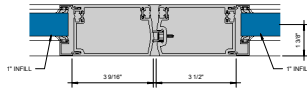
LOCKING STILE W/SIDELITE - 1" INFILL
6" = 1'-0"

KAWNEER AN ARCONIC COMPANY

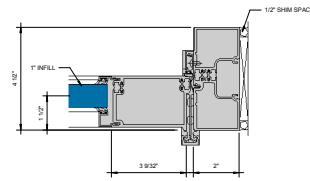
555 Guthridge Ct.
Technology Park/Atlanta
Norcross, GA 30092 USA
Tel: +1 770 449 5555



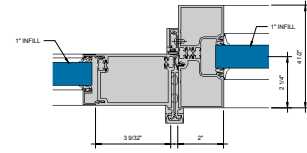
① CGH STILE - 1" INFILL
6" = 1'-0"



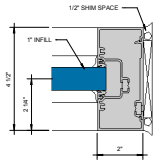
② MEETING STILE - 1" INFILL
6" = 1'-0"



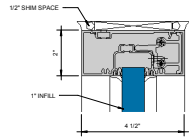
③ CGH STILE - 1" INFILL
6" = 1'-0"



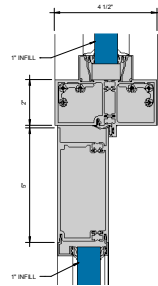
④ CGH STILE W/SIDELITE - 1" INFILL
6" = 1'-0"



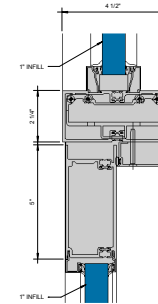
⑤ JAMB - 1" INFILL
6" = 1'-0"



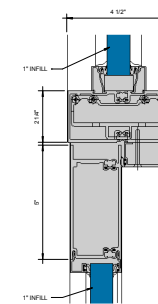
① TRANSOM HEAD - 1" INFILL
6" = 1'-0"



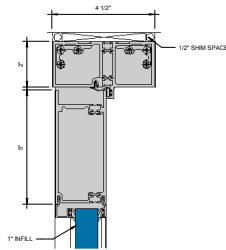
② TRANSOM BAR - 1" INFILL
6" = 1'-0"



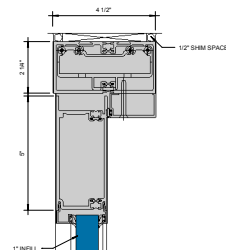
③ TRANSOM BAR - 1" INFILL
6" = 1'-0"



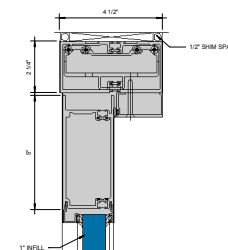
④ TRANSOM BAR - 1" INFILL
6" = 1'-0"



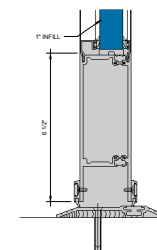
⑤ DOOR HEADER - 1" INFILL
6" = 1'-0"



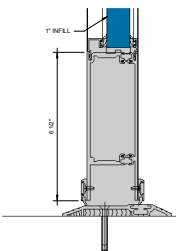
⑥ DOOR HEADER - 1" INFILL
6" = 1'-0"



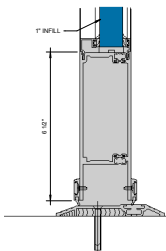
⑦ DOOR HEADER - 1" INFILL
6" = 1'-0"



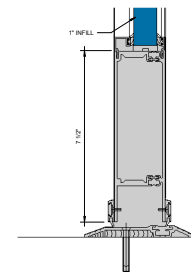
⑧ BOTTOM RAIL - 1" INFILL
6" = 1'-0"



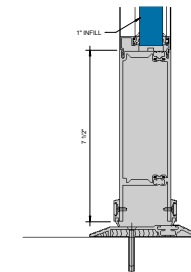
⑨ BOTTOM RAIL - 1" INFILL
6" = 1'-0"



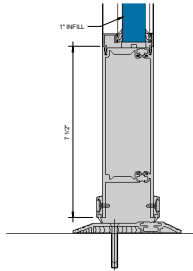
⑩ BOTTOM RAIL - 1" INFILL
6" = 1'-0"



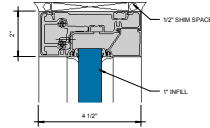
⑪ OPTIONAL BOTTOM RAIL - 1" INFILL
6" = 1'-0"



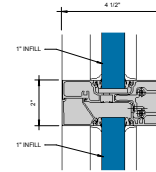
⑫ OPTIONAL BOTTOM RAIL - 1" INFILL
6" = 1'-0"



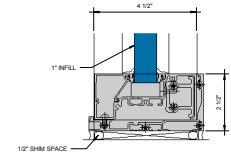
① OPTIONAL BOTTOM RAIL - 1" INFILL
6" = 1'-0"



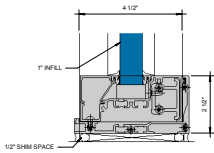
② HEAD - 1" INFILL
6" = 1'-0"



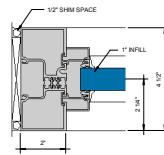
③ HORIZONTAL - 1" INFILL
6" = 1'-0"



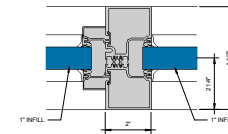
④ SILL WITH SEALANT OPTION - 1" INFILL
6" = 1'-0"



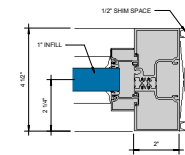
SILL WITH SEALANT & GASKET OPTION - 1" INFILL
⑤ 6" = 1'-0"



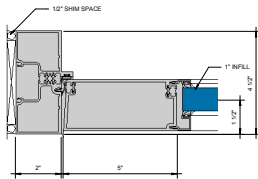
POCKET INSERT AT TRANSOM - 1" INFILL
⑥ 6" = 1'-0"



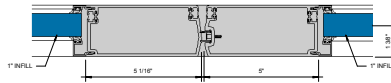
POCKET INSERT AT TRANSOM W/WIDE-LITE - 1" INFILL
⑦ 6" = 1'-0"



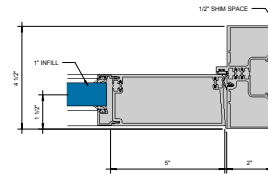
POCKET INSERT AT TRANSOM - 1" INFILL
⑧ 6" = 1'-0"



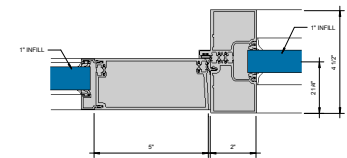
⑨ LOCKING STILE - 1" INFILL
6" = 1'-0"



⑩ MEETING STILE - 1" INFILL
6" = 1'-0"



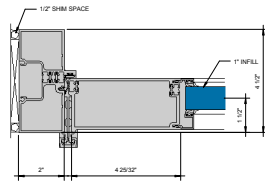
⑪ LOCKING STILE - 1" INFILL
6" = 1'-0"



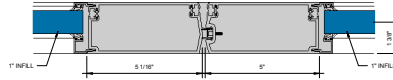
⑫ LOCKING STILE - 1" INFILL
6" = 1'-0"

KAWNEER AN ARCONIC COMPANY

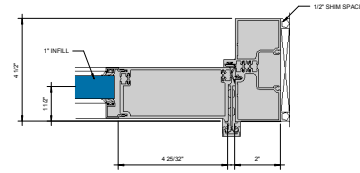
555 Guthridge Ct.
Technology Park/Atlanta
Norcross, GA 30092 USA
Tel: +1 770 449 5555



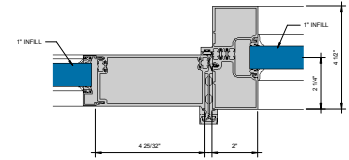
① CGH STILE - 1\"/>



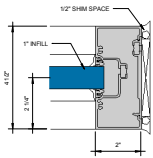
② MEETING STILE - 1\"/>



③ CGH STILE - 1\"/>



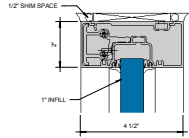
④ CGH STILE WIDELITE - 1\"/>



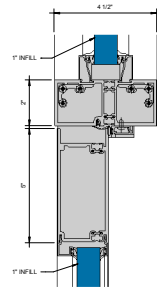
⑤ JAMB - 1\"/>

KAWNEER AN ARCONIC COMPANY

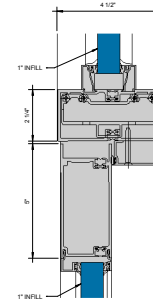
555 Guthridge Ct.
 Technology Park/Atlanta
 Norcross, GA 30092 USA
 Tel: + 1 770 449 5555



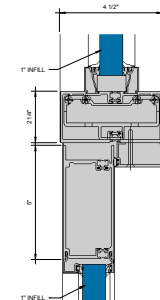
① TRANSOM HEAD - 1" INFILL
6" = 1'-0"



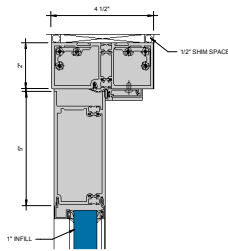
② TRANSOM BAR - 1" INFILL
6" = 1'-0"



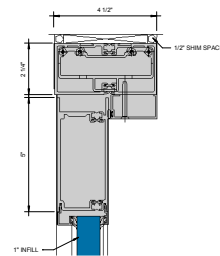
③ TRANSOM BAR - 1" INFILL
6" = 1'-0"



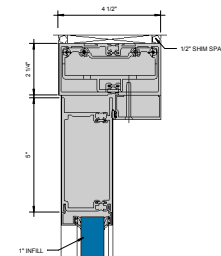
④ TRANSOM BAR - 1" INFILL
6" = 1'-0"



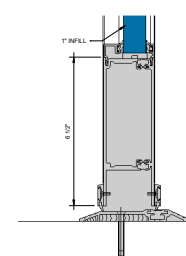
⑤ DOOR HEADER - 1" INFILL
6" = 1'-0"



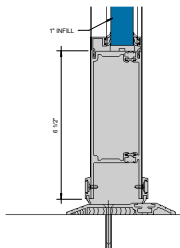
⑥ DOOR HEADER - 1" INFILL
6" = 1'-0"



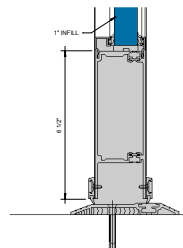
⑦ DOOR HEADER - 1" INFILL
6" = 1'-0"



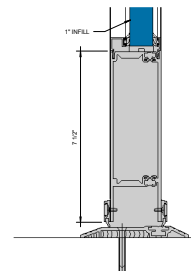
⑧ BOTTOM RAIL - 1" INFILL
6" = 1'-0"



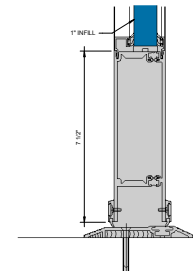
⑨ BOTTOM RAIL - 1" INFILL
6" = 1'-0"



⑩ BOTTOM RAIL - 1" INFILL
6" = 1'-0"



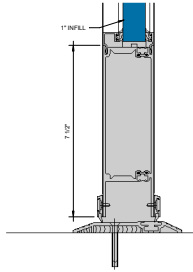
⑪ OPTIONAL BOTTOM RAIL - 1" INFILL
6" = 1'-0"



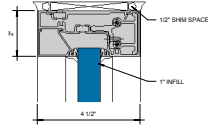
⑫ OPTIONAL BOTTOM RAIL - 1" INFILL
6" = 1'-0"

KAWNEER AN ARCONIC COMPANY

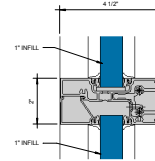
555 Guthridge Ct.
Technology Park/Atlanta
Norcross, GA 30092 USA
Tel: +1 770 449 5555



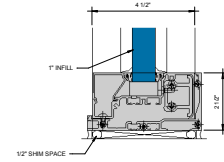
OPTIONAL BOTTOM RAIL - 1" INFILL
6" = 1'-0"



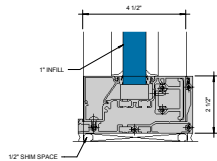
HEAD - 1" INFILL
6" = 1'-0"



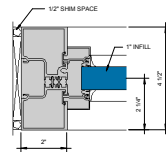
HORIZONTAL - 1" INFILL
6" = 1'-0"



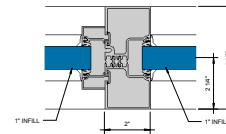
SILL WITH SEALANT OPTION - 1" INFILL
6" = 1'-0"



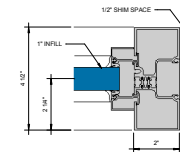
SILL WITH SEALANT & GASKET OPTION - 1" INFILL
6" = 1'-0"



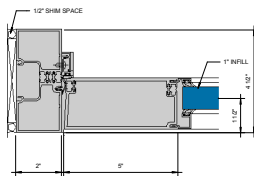
POCKET INSERT AT TRANSOM - 1" INFILL
6" = 1'-0"



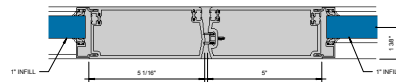
POCKET INSERT AT TRANSOM WISSIDELITE - 1" INFILL
6" = 1'-0"



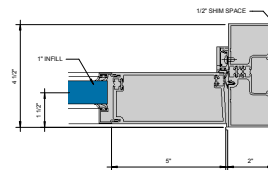
POCKET INSERT AT TRANSOM - 1" INFILL
6" = 1'-0"



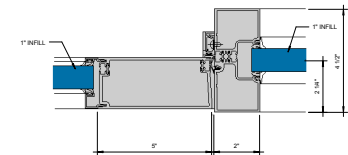
LOCKING HINGE STILE - 1" INFILL
6" = 1'-0"



MEETING STILE - 1" INFILL
6" = 1'-0"



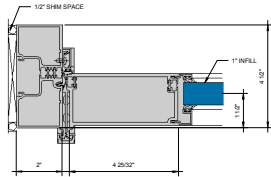
LOCKING HINGE STILE - 1" INFILL
6" = 1'-0"



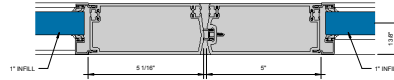
LOCKING HINGE STILE WISSIDELITE - 1" INFILL
6" = 1'-0"

KAWNEER AN ARCONIC COMPANY

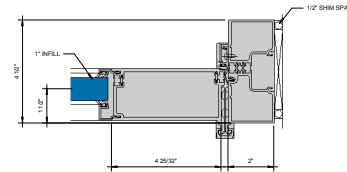
555 Guthridge Ct.
Technology Park/Atlanta
Norcross, GA 30092 USA
Tel: +1 770 449 5555



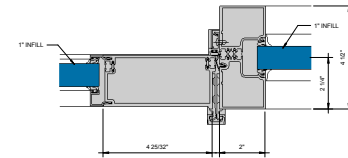
① CGH STILE - 1" INFILL
6" x 1 1/2"



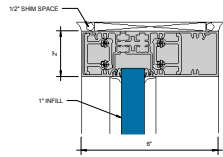
② MEETING STILE - 1" INFILL
6" x 1 1/2"



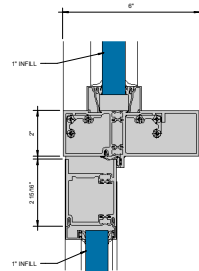
③ CGH STILE - 1" INFILL
6" x 1 1/2"



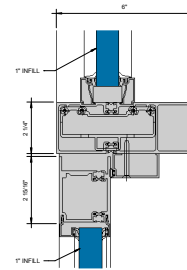
④ CGH STILE W/SIDELITE - 1" INFILL
6" x 1 1/2"



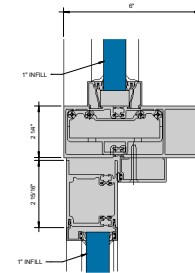
① TRANSOM HEAD - 1" INFILL
6" = 1'-0"



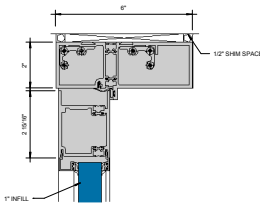
② TRANSOM BAR - 1" INFILL
6" = 1'-0"



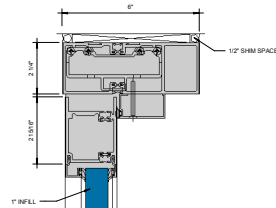
③ TRANSOM BAR - 1" INFILL
6" = 1'-0"



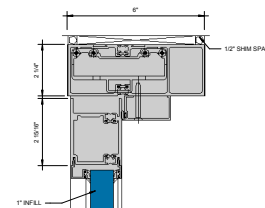
④ TRANSOM BAR - 1" INFILL
6" = 1'-0"



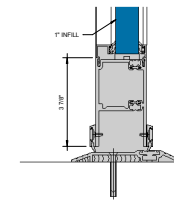
⑤ DOOR HEADER - 1" INFILL
6" = 1'-0"



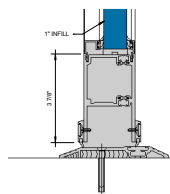
⑥ DOOR HEADER - 1" INFILL
6" = 1'-0"



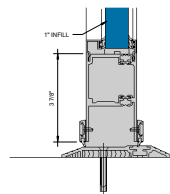
⑦ DOOR HEADER - 1" INFILL
6" = 1'-0"



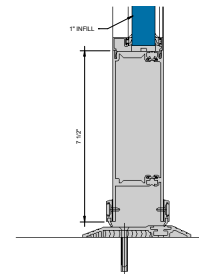
⑧ BOTTOM RAIL - 1" INFILL
6" = 1'-0"



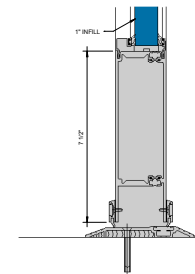
⑨ BOTTOM RAIL - 1" INFILL
6" = 1'-0"



⑩ BOTTOM RAIL - 1" INFILL
6" = 1'-0"



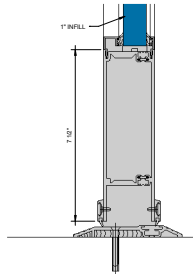
⑪ OPTIONAL BOTTOM RAIL - 1" INFILL
6" = 1'-0"



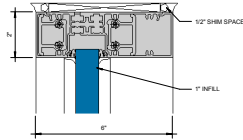
⑫ OPTIONAL BOTTOM RAIL - 1" INFILL
6" = 1'-0"

KAWNEER AN ARCONIC COMPANY

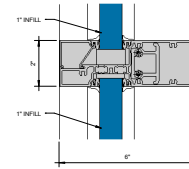
555 Guthridge Ct.
Technology Park/Atlanta
Norcross, GA 30092 USA
Tel: +1 770 449 5555



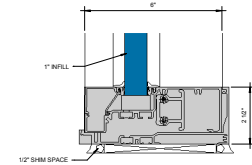
OPTIONAL BOTTOM RAIL - 1" INFILL
6" = 1'-0"



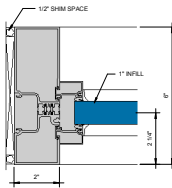
HEAD - 1" INFILL
6" = 1'-0"



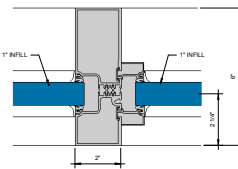
HORIZONTAL - 1" INFILL
6" = 1'-0"



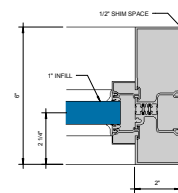
SILL WITH SEALANT OPTION - 1" INFILL
6" = 1'-0"



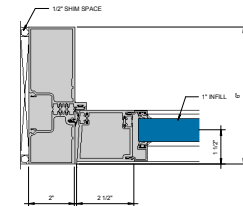
POCKET INSERT AT TRANSOM - 1" INFILL
6" = 1'-0"



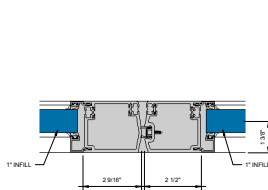
POCKET INSERT AT TRANSOM W/SIDELITE - 1" INFILL
6" = 1'-0"



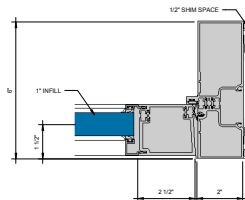
POCKET INSERT AT TRANSOM - 1" INFILL
6" = 1'-0"



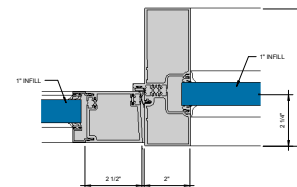
LOCKING STILE - 1" INFILL
6" = 1'-0"



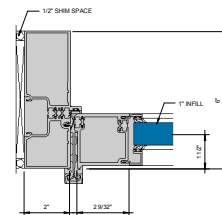
MEETING STILE - 1" INFILL
6" = 1'-0"



LOCKING STILE - 1" INFILL
6" = 1'-0"



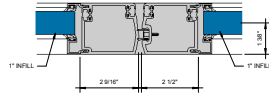
LOCKING STILE W/SIDELITE - 1" INFILL
6" = 1'-0"



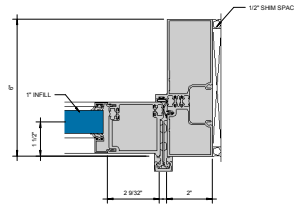
CCH STILE - 1" INFILL
6" = 1'-0"

KAWNEER AN ARCONIC COMPANY

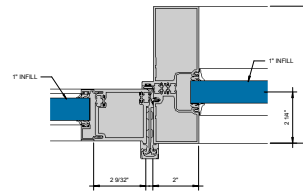
555 Guthridge Ct.
Technology Park/Atlanta
Norcross, GA 30092 USA
Tel: +1 770 449 5555



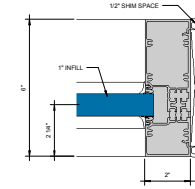
① MEETING STILE - 1" INFILL
6" = 1" O"



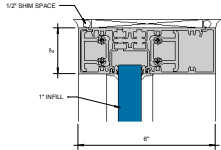
② CGH STILE - 1" INFILL
6" = 1" O"



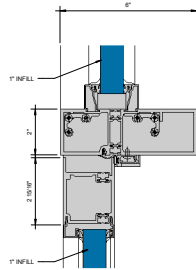
③ CGH STILE WISDELITE - 1" INFILL
6" = 1" O"



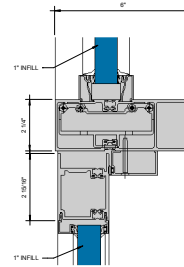
④ JAMB - 1" INFILL
6" = 1" O"



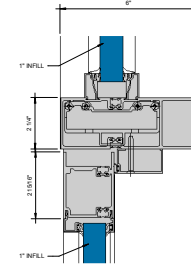
① TRANSOM HEAD - 1" INFILL
6" = 1'-0"



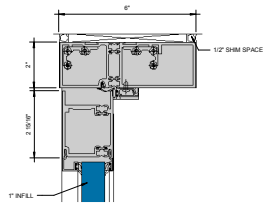
② TRANSOM BAR - 1" INFILL
6" = 1'-0"



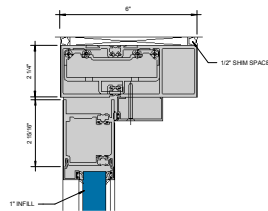
③ TRANSOM BAR - 1" INFILL
6" = 1'-0"



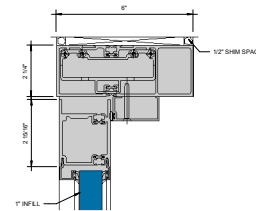
④ TRANSOM BAR - 1" INFILL
6" = 1'-0"



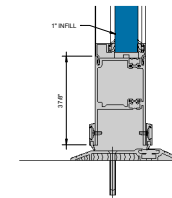
⑤ DOOR HEADER - 1" INFILL
6" = 1'-0"



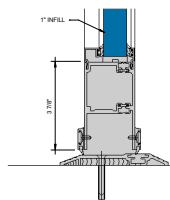
⑥ DOOR HEADER - 1" INFILL
6" = 1'-0"



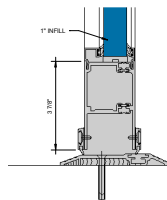
⑦ DOOR HEADER - 1" INFILL
6" = 1'-0"



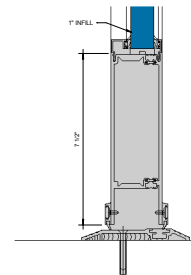
⑧ BOTTOM RAIL - 1" INFILL
6" = 1'-0"



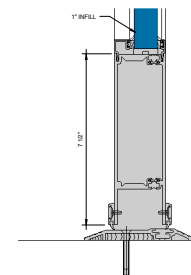
⑨ BOTTOM RAIL - 1" INFILL
6" = 1'-0"



⑩ BOTTOM RAIL - 1" INFILL
6" = 1'-0"



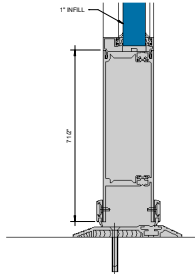
⑪ OPTIONAL BOTTOM RAIL - 1" INFILL
6" = 1'-0"



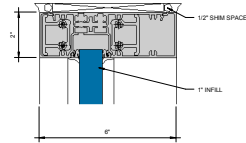
⑫ OPTIONAL BOTTOM RAIL - 1" INFILL
6" = 1'-0"

KAWNEER AN ARCONIC COMPANY

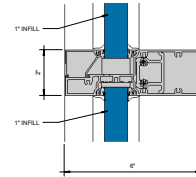
555 Guthridge Ct.
Technology Park/Atlanta
Norcross, GA 30092 USA
Tel: +1 770 449 5555



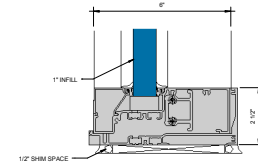
① OPTIONAL BOTTOM RAIL - 1" INFILL
6" = 1'-0"



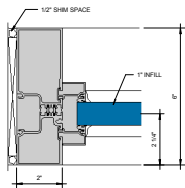
② HEAD - 1" INFILL
6" = 1'-0"



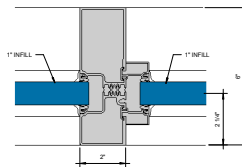
③ HORIZONTAL - 1" INFILL
6" = 1'-0"



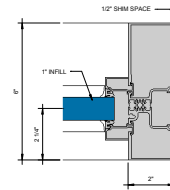
④ SILL WITH SEALANT OPTION - 1" INFILL
6" = 1'-0"



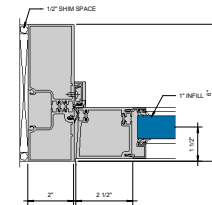
⑤ POCKET INSERT AT TRANSOM - 1" INFILL
6" = 1'-0"



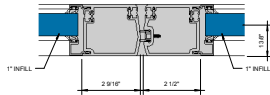
⑥ POCKET INSERT AT TRANSOM W/SIDELITE - 1" INFILL
6" = 1'-0"



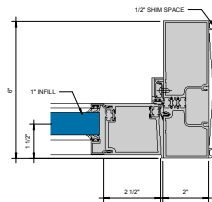
⑦ POCKET INSERT AT TRANSOM - 1" INFILL
6" = 1'-0"



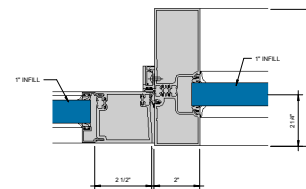
⑧ LOCKING HINGE STILE - 1" INFILL
6" = 1'-0"



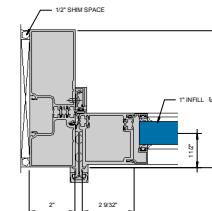
⑨ MEETING STILE - 1" INFILL
6" = 1'-0"



⑩ LOCKING HINGE STILE - 1" INFILL
6" = 1'-0"



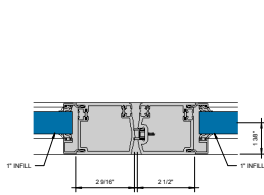
⑪ LOCKING HINGE STILE W/SIDELITE - 1" INFILL
6" = 1'-0"



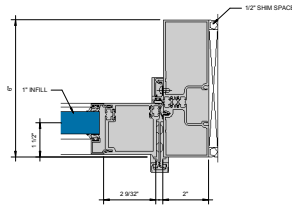
⑫ CGH STILE - 1" INFILL
6" = 1'-0"

KAWNEER AN ARCONIC COMPANY

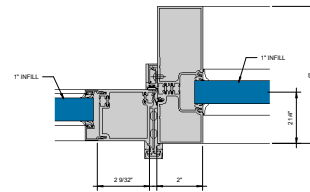
555 Guthridge Ct.
Technology Park/Atlanta
Norcross, GA 30092 USA
Tel: +1 770 449 5555



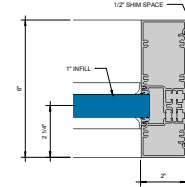
① MEETING STILE - 1" INFILL
6" = 1'-0"



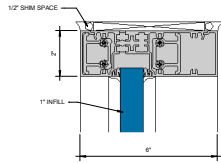
② CGH STILE - 1" INFILL
6" = 1'-0"



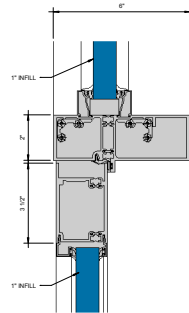
③ CGH STILE W/WIDE FLANGE - 1" INFILL
6" = 1'-0"



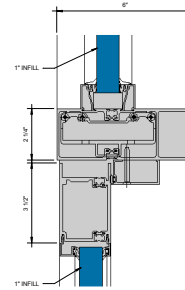
④ JAMB - 1" INFILL
6" = 1'-0"



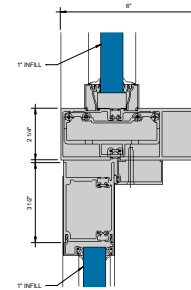
① TRANSOM HEAD - 1" INFILL
6" = 1'-0"



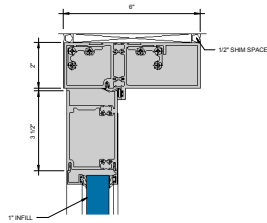
② TRANSOM BAR - 1" INFILL
6" = 1'-0"



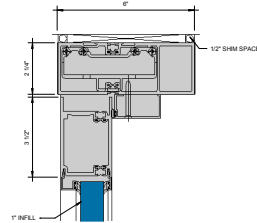
③ TRANSOM BAR - 1" INFILL
6" = 1'-0"



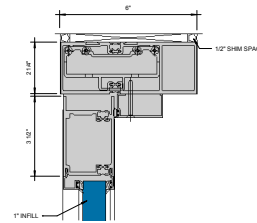
④ TRANSOM BAR - 1" INFILL
6" = 1'-0"



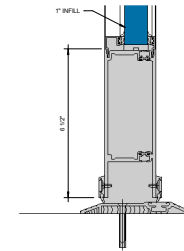
⑤ DOOR HEADER - 1" INFILL
6" = 1'-0"



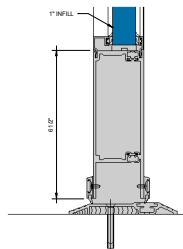
⑥ DOOR HEADER - 1" INFILL
6" = 1'-0"



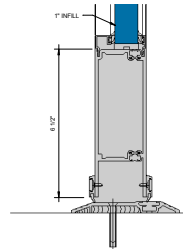
⑦ DOOR HEADER - 1" INFILL
6" = 1'-0"



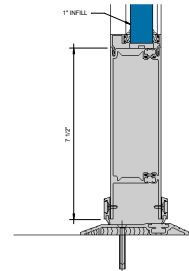
⑧ BOTTOM RAIL - 1" INFILL
6" = 1'-0"



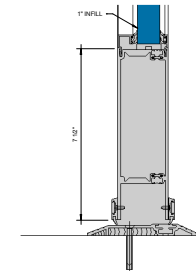
⑨ BOTTOM RAIL - 1" INFILL
6" = 1'-0"



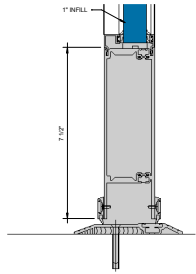
⑩ BOTTOM RAIL - 1" INFILL
6" = 1'-0"



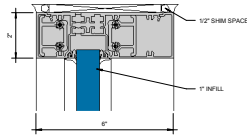
⑪ OPTIONAL BOTTOM RAIL - 1" INFILL
6" = 1'-0"



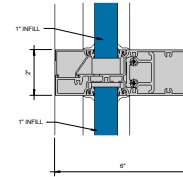
⑫ OPTIONAL BOTTOM RAIL - 1" INFILL
6" = 1'-0"



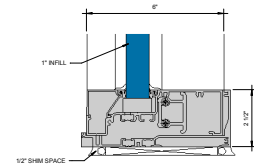
OPTIONAL BOTTOM RAIL - 1" INFILL
6" = 1'-0"



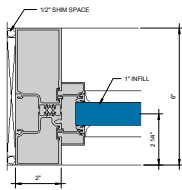
HEAD - 1" INFILL
6" = 1'-0"



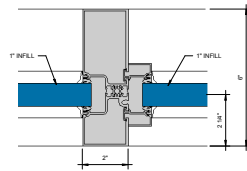
HORIZONTAL - 1" INFILL
6" = 1'-0"



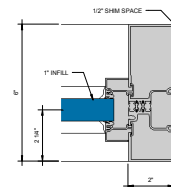
SILL WITH SEALANT OPTION - 1" INFILL
6" = 1'-0"



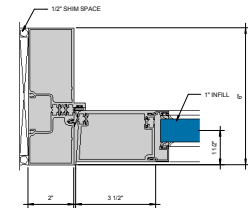
POCKET INSERT AT TRANSOM - 1" INFILL
6" = 1'-0"



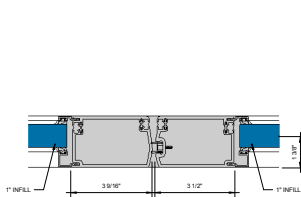
POCKET INSERT AT TRANSOM W/SIDELITE - 1" INFILL
6" = 1'-0"



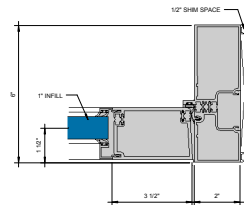
POCKET INSERT AT TRANSOM - 1" INFILL
6" = 1'-0"



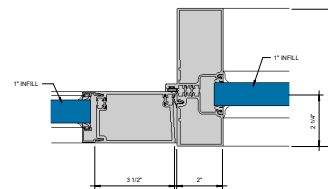
LOCKING STILE - 1" INFILL
6" = 1'-0"



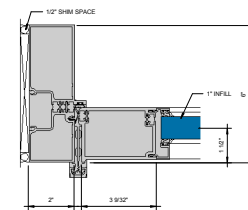
MEETING STILE - 1" INFILL
6" = 1'-0"



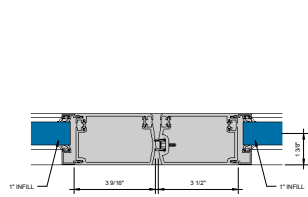
LOCKING STILE - 1" INFILL
6" = 1'-0"



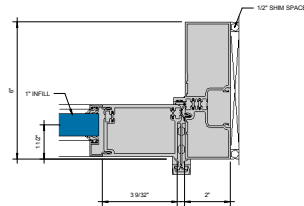
LOCKING STILE W/SIDELITE - 1" INFILL
6" = 1'-0"



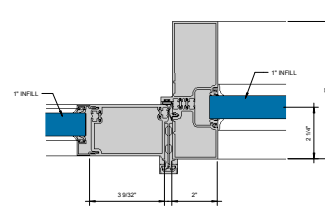
CCH STILE - 1" INFILL
6" = 1'-0"



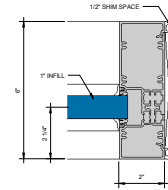
① MEETING STILE - 1" INFILL
6' = 1'-0"



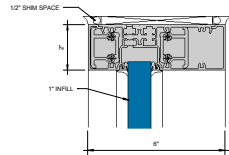
② CGH STILE - 1" INFILL
6' = 1'-0"



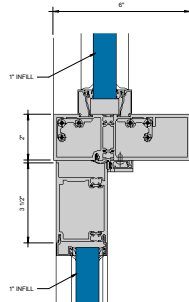
③ CGH STILE W/SIDELITE - 1" INFILL
6' = 1'-0"



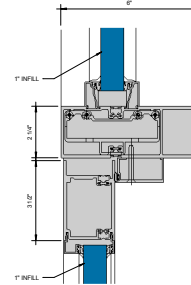
④ JAMB - 1" INFILL
6' = 1'-0"



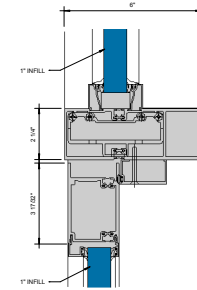
① TRANSOM HEAD - 1" INFILL
6" = 1'-0"



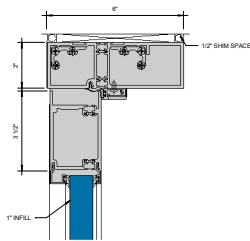
② TRANSOM BAR - 1" INFILL
6" = 1'-0"



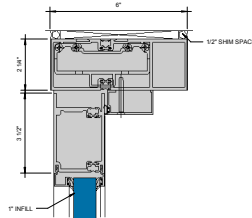
③ TRANSOM BAR - 1" INFILL
6" = 1'-0"



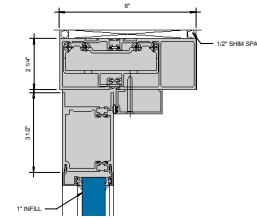
④ TRANSOM BAR - 1" INFILL
6" = 1'-0"



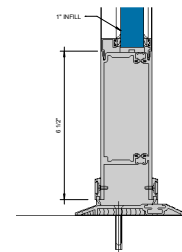
⑤ DOOR HEADER - 1" INFILL
6" = 1'-0"



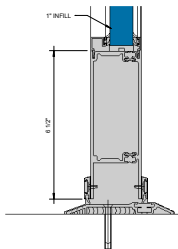
⑥ DOOR HEADER - 1" INFILL
6" = 1'-0"



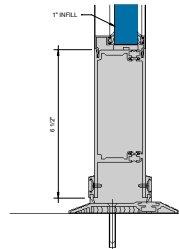
⑦ DOOR HEADER - 1" INFILL
6" = 1'-0"



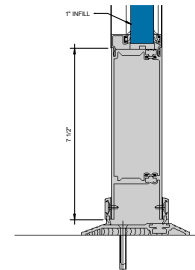
⑧ BOTTOM RAIL - 1" INFILL
6" = 1'-0"



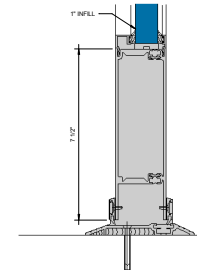
⑨ BOTTOM RAIL - 1" INFILL
6" = 1'-0"



⑩ BOTTOM RAIL - 1" INFILL
6" = 1'-0"



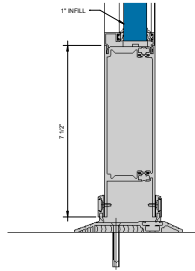
⑪ OPTIONAL BOTTOM RAIL - 1" INFILL
6" = 1'-0"



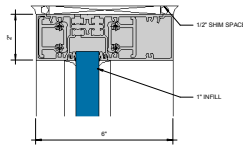
⑫ OPTIONAL BOTTOM RAIL - 1" INFILL
6" = 1'-0"

KAWNEER AN ARCONIC COMPANY

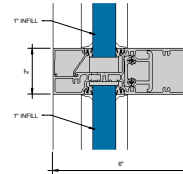
555 Guthridge Ct.
Technology Park/Atlanta
Norcross, GA 30092 USA
Tel: +1 770 449 5555



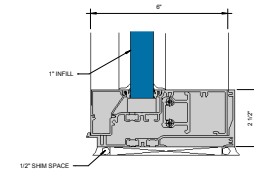
① OPTIONAL BOTTOM RAIL - 1" INFILL
6" = 1'-0"



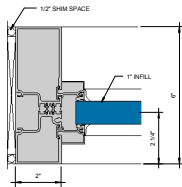
② HEAD - 1" INFILL
6" = 1'-0"



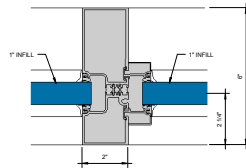
③ HORIZONTAL - 1" INFILL
6" = 1'-0"



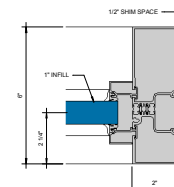
④ SILL WITH SEALANT OPTION - 1" INFILL
6" = 1'-0"



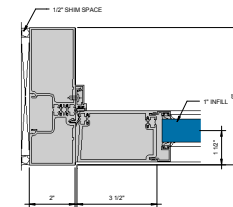
⑤ POCKET INSERT AT TRANSOM - 1" INFILL
6" = 1'-0"



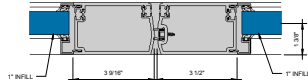
⑥ POCKET INSERT AT TRANSOM W/ SIDELITE - 1" INFILL
6" = 1'-0"



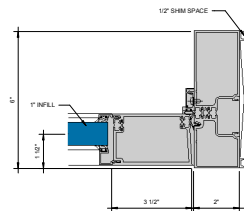
⑦ POCKET INSERT AT TRANSOM - 1" INFILL
6" = 1'-0"



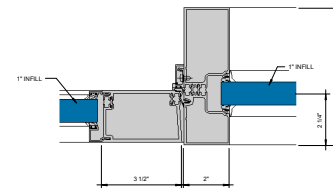
⑧ LOCKING STILE - 1" INFILL
6" = 1'-0"



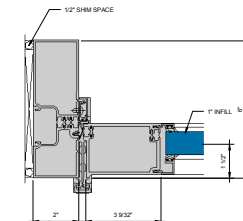
⑨ MEETING STILE - 1" INFILL
6" = 1'-0"



⑩ LOCKING STILE - 1" INFILL
6" = 1'-0"



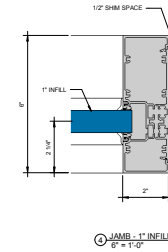
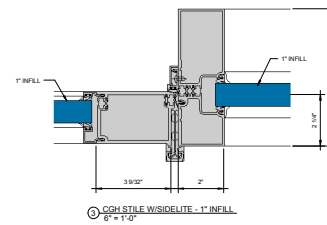
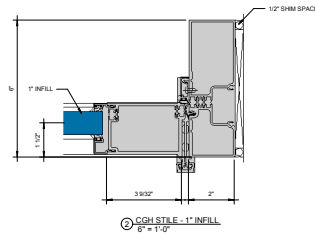
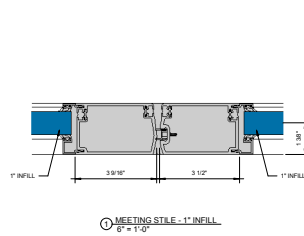
⑪ LOCKING STILE W/ SIDELITE - 1" INFILL
6" = 1'-0"

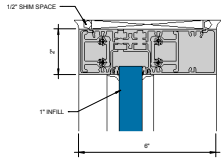


⑫ CCH STILE - 1" INFILL
6" = 1'-0"

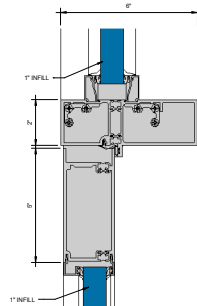
KAWNEER AN ARCONIC COMPANY

555 Guthridge Ct.
Technology Park/Atlanta
Norcross, GA 30092 USA
Tel: +1 770 449 5555

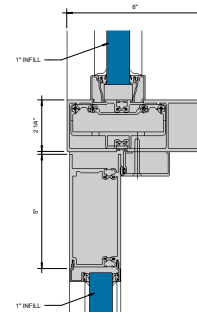




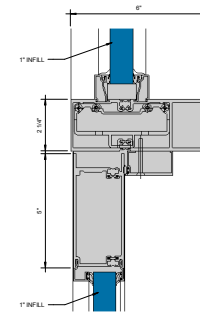
① TRANSOM HEAD - 1" INFILL
6" = 1'-0"



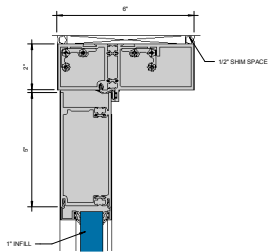
② TRANSOM BAR - 1" INFILL
6" = 1'-0"



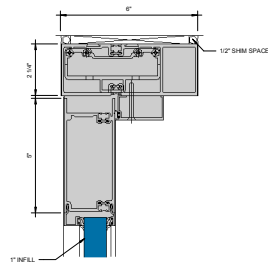
③ TRANSOM BAR - 1" INFILL
6" = 1'-0"



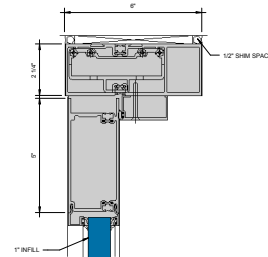
④ TRANSOM BAR - 1" INFILL
6" = 1'-0"



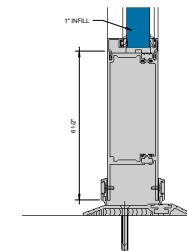
⑤ DOOR HEADER - 1" INFILL
6" = 1'-0"



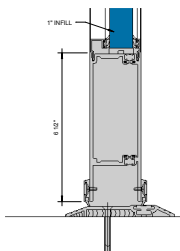
⑥ DOOR HEADER - 1" INFILL
6" = 1'-0"



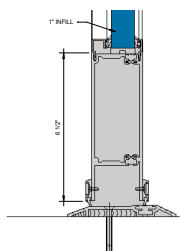
⑦ DOOR HEADER - 1" INFILL
6" = 1'-0"



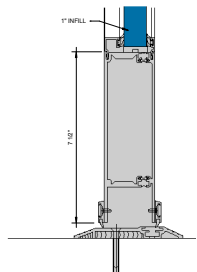
⑧ BOTTOM RAIL - 1" INFILL
6" = 1'-0"



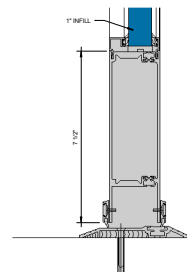
⑨ BOTTOM RAIL - 1" INFILL
6" = 1'-0"



⑩ BOTTOM RAIL - 1" INFILL
6" = 1'-0"



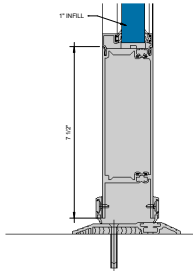
⑪ OPTIONAL BOTTOM RAIL - 1" INFILL
6" = 1'-0"



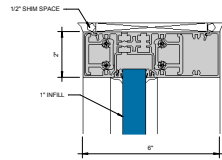
⑫ OPTIONAL BOTTOM RAIL - 1" INFILL
6" = 1'-0"

KAWNEER AN ARCONIC COMPANY

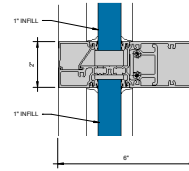
555 Guthridge Ct.
Technology Park/Atlanta
Norcross, GA 30092 USA
Tel: +1 770 449 5555



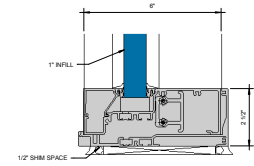
OPTIONAL BOTTOM RAIL - 1" INFILL
6" x 1'-0"



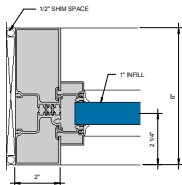
HEAD - 1" INFILL
6" x 1'-0"



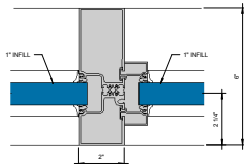
HORIZONTAL - 1" INFILL
6" x 1'-0"



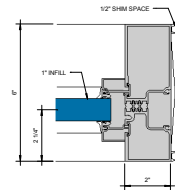
SILL WITH SEALANT OPTION - 1" INFILL
6" x 1'-0"



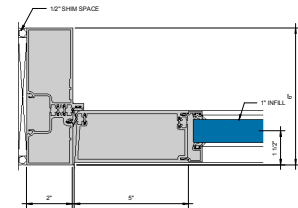
POCKET INSERT AT TRANSOM - 1" INFILL
6" x 1'-0"



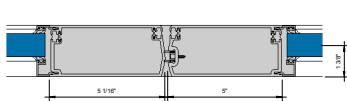
POCKET INSERT AT TRANSOM W/SIDELITE - 1" INFILL
6" x 1'-0"



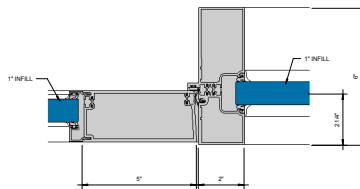
POCKET INSERT AT TRANSOM - 1" INFILL
6" x 1'-0"



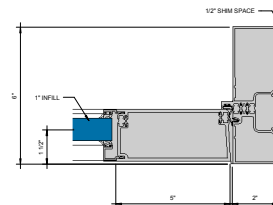
LOCK-HINGE STILE - 1" INFILL
6" x 1'-0"



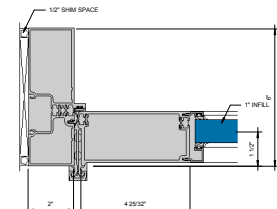
MEETING STILE - 1" INFILL
6" x 1'-0"



LOCK-HINGE STILE W/SIDELITE - 1" INFILL
6" x 1'-0"



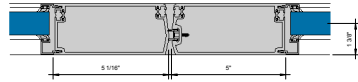
LOCK-HINGE STILE - 1" INFILL
6" x 1'-0"



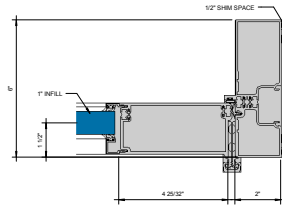
CCH STILE - 1" INFILL
6" x 1'-0"

KAWNEER AN ARCONIC COMPANY

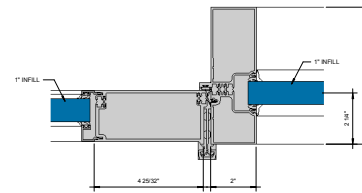
555 Guthridge Ct.
Technology Park/Atlanta
Norcross, GA 30092 USA
Tel: +1 770 449 5555



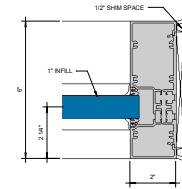
① MEETING STILE - 1" INFILL
8" = 1'-0"



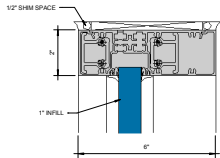
② CGH STILE - 1" INFILL
8" = 1'-0"



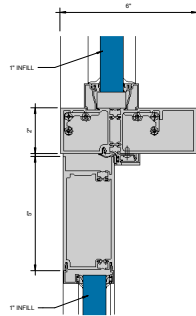
③ CGH STILE W/SIDELITE - 1" INFILL
8" = 1'-0"



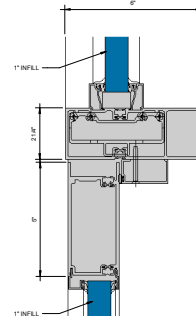
④ JAMB - 1" INFILL
8" = 1'-0"



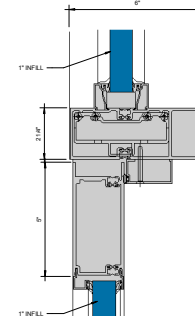
① TRANSOM HEAD - 1" INFILL
6" = 1'-0"



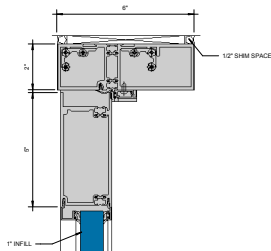
② TRANSOM BAR - 1" INFILL
6" = 1'-0"



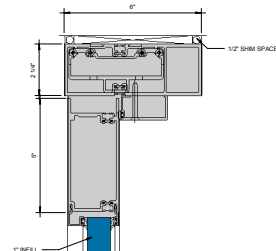
③ TRANSOM BAR - 1" INFILL
6" = 1'-0"



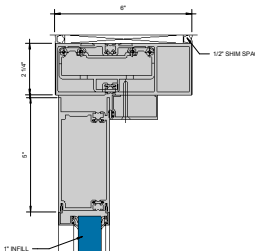
④ TRANSOM BAR - 1" INFILL
6" = 1'-0"



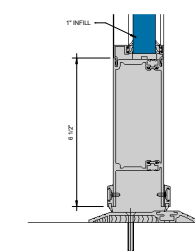
⑤ DOOR HEADER - 1" INFILL
6" = 1'-0"



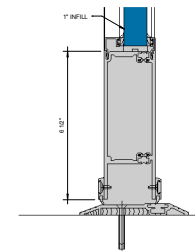
⑥ DOOR HEADER - 1" INFILL
6" = 1'-0"



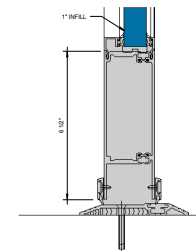
⑦ DOOR HEADER - 1" INFILL
6" = 1'-0"



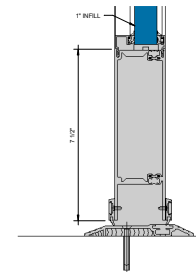
⑧ BOTTOM RAIL - 1" INFILL
6" = 1'-0"



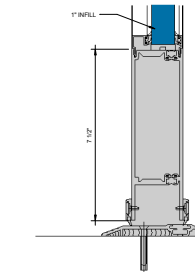
⑨ BOTTOM RAIL - 1" INFILL
6" = 1'-0"



⑩ BOTTOM RAIL - 1" INFILL
6" = 1'-0"



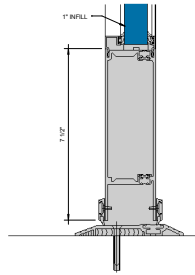
⑪ OPTIONAL BOTTOM RAIL - 1" INFILL
6" = 1'-0"



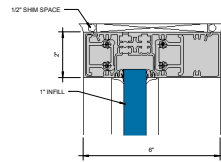
⑫ OPTIONAL BOTTOM RAIL - 1" INFILL
6" = 1'-0"

KAWNEER AN ARCONIC COMPANY

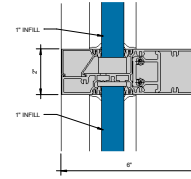
555 Guthridge Ct.
Technology Park/Atlanta
Norcross, GA 30092 USA
Tel: +1 770 449 5555



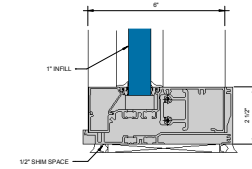
OPTIONAL BOTTOM RAIL - 1" INFILL
6" = 1'-0"



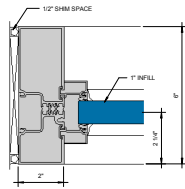
HEAD - 1" INFILL
6" = 1'-0"



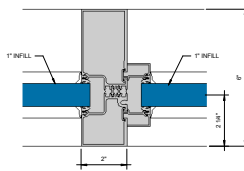
HORIZONTAL - 1" INFILL
6" = 1'-0"



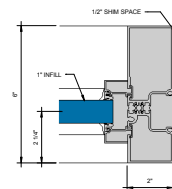
SILL WITH SEALANT OPTION - 1" INFILL
6" = 1'-0"



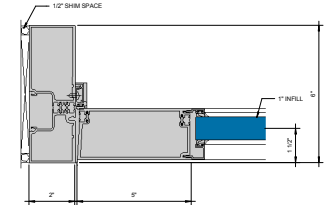
POCKET INSERT AT TRANSOM - 1" INFILL
6" = 1'-0"



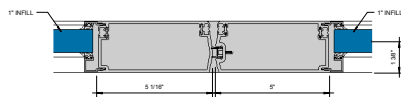
POCKET INSERT AT TRANSOM WISSELITE - 1" INFILL
6" = 1'-0"



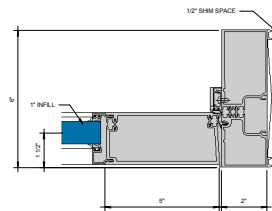
POCKET INSERT AT TRANSOM - 1" INFILL
6" = 1'-0"



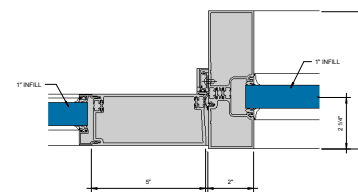
LOCKING STILE - 1" INFILL
6" = 1'-0"



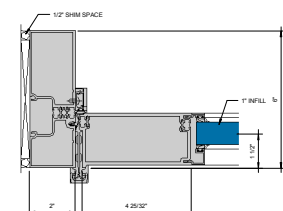
MEETING STILE - 1" INFILL
6" = 1'-0"



LOCKING STILE - 1" INFILL
6" = 1'-0"



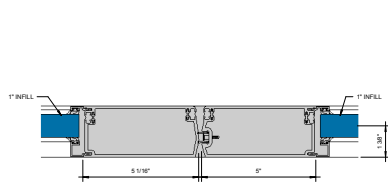
LOCKING STILE WISSELITE - 1" INFILL
6" = 1'-0"



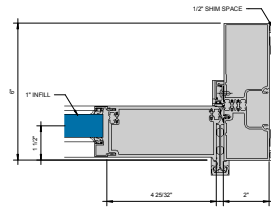
CGH STILE - 1" INFILL
6" = 1'-0"

KAWNEER AN ARCONIC COMPANY

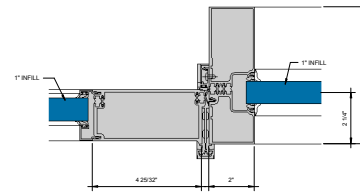
555 Guthridge Ct.
Technology Park/Atlanta
Norcross, GA 30092 USA
Tel: +1 770 449 5555



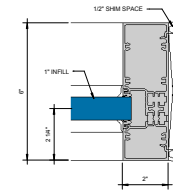
① MEETING STILE - 1" INFILL
 $\phi^* = 1'-0"$



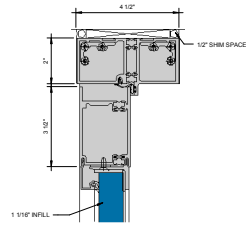
② SIDE STILE - 1" INFILL
 $\phi^* = 1'-0"$



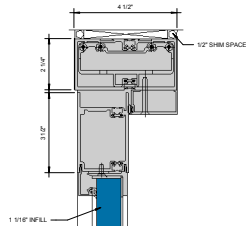
③ SIDE STILE W/SPIDELITE - 1" INFILL
 $\phi^* = 1'-0"$



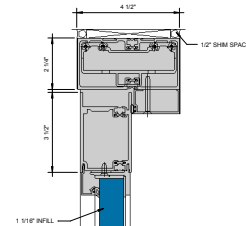
④ JAMB - 1" INFILL
 $\phi^* = 1'-0"$



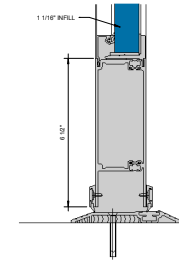
① DOOR HEADER - 1" INFILL
6" = 1'-0"



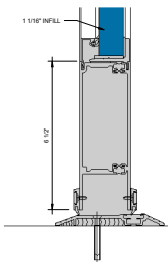
② DOOR HEADER - 1" INFILL
6" = 1'-0"



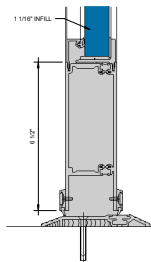
③ DOOR HEADER - 1" INFILL
6" = 1'-0"



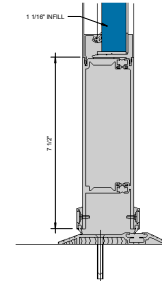
④ BOTTOM RAIL - 1" INFILL
6" = 1'-0"



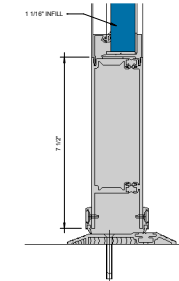
⑤ BOTTOM RAIL - 1" INFILL
6" = 1'-0"



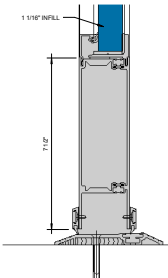
⑥ BOTTOM RAIL - 1" INFILL
6" = 1'-0"



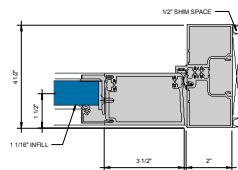
⑦ OPTIONAL BOTTOM RAIL - 1" INFILL
6" = 1'-0"



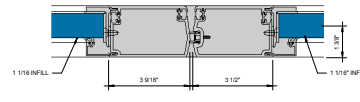
⑧ OPTIONAL BOTTOM RAIL - 1" INFILL
6" = 1'-0"



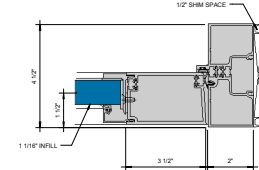
⑨ OPTIONAL BOTTOM RAIL - 1" INFILL
6" = 1'-0"



⑩ LOCKING STILE - 1" INFILL
6" = 1'-0"



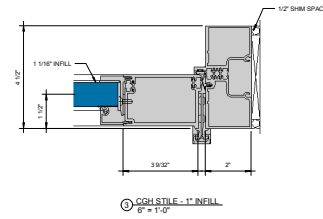
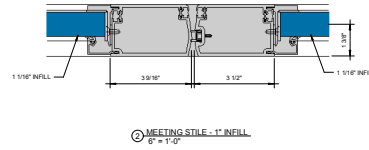
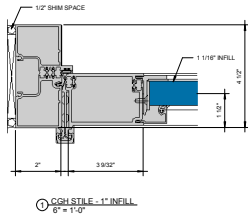
⑪ MEETING STILE - 1" INFILL
6" = 1'-0"

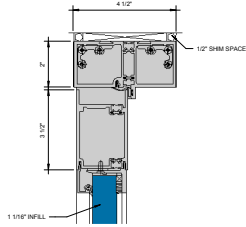


⑫ LOCKING STILE - 1" INFILL
6" = 1'-0"

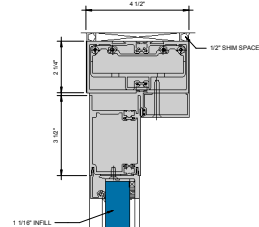
KAWNEER AN ARCONIC COMPANY

555 Guthridge Ct.
Technology Park/Atlanta
Norcross, GA 30092 USA
Tel: +1 770 449 5555

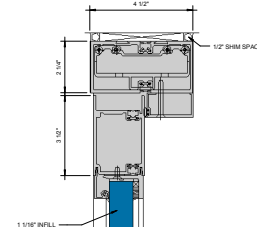




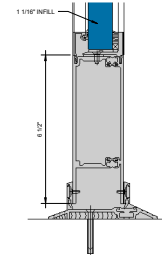
① DOOR HEADER - 1" INFILL
D = 1'-0"



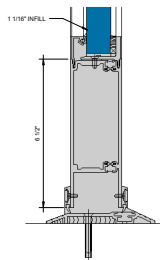
② DOOR HEADER - 1" INFILL
D = 1'-0"



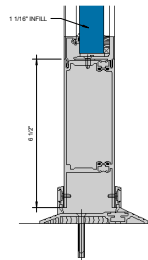
③ DOOR HEADER - 1" INFILL
D = 1'-0"



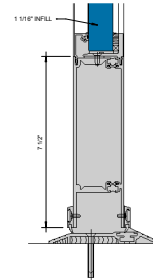
④ BOTTOM RAIL - 1" INFILL
D = 1'-0"



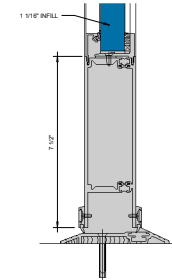
⑤ BOTTOM RAIL - 1" INFILL
D = 1'-0"



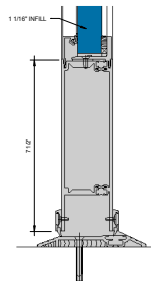
⑥ BOTTOM RAIL - 1" INFILL
D = 1'-0"



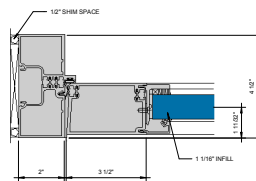
⑦ OPTIONAL BOTTOM RAIL - 1" INFILL
D = 1'-0"



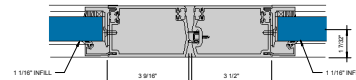
⑧ OPTIONAL BOTTOM RAIL - 1" INFILL
D = 1'-0"



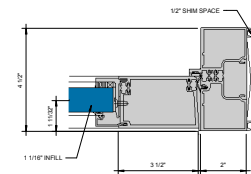
⑨ OPTIONAL BOTTOM RAIL - 1" INFILL
D = 1'-0"



⑩ LOCKING STILE - 1" INFILL
D = 1'-0"



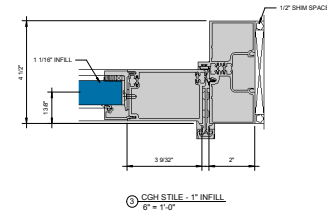
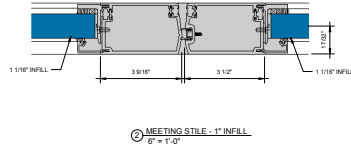
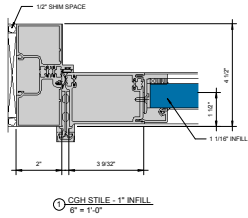
⑪ MEETING STILE - 1" INFILL
D = 1'-0"



⑫ LOCKING STILE - 1" INFILL
D = 1'-0"

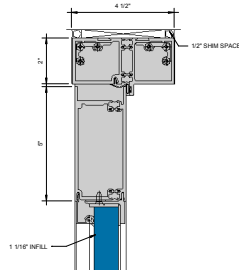
KAWNEER AN ARCONIC COMPANY

555 Guthridge Ct.
Technology Park/Atlanta
Norcross, GA 30092 USA
Tel: +1 770 449 5555

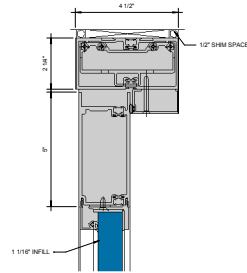


KAWNEER AN ARCONIC COMPANY

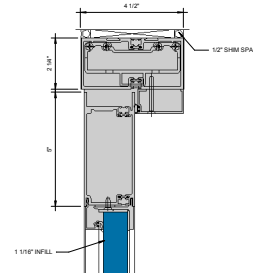
555 Guthridge Ct.
Technology Park/Atlanta
Norcross, GA 30092 USA
Tel: +1 770 449 5555



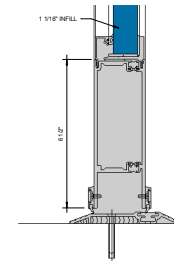
① DOOR HEADER - 1' INFILL
6" = 1'-0"



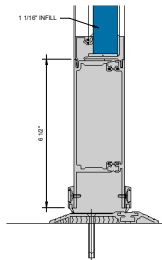
② DOOR HEADER - 1' INFILL
6" = 1'-0"



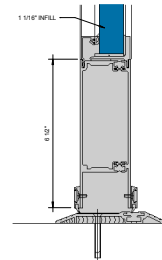
③ DOOR HEADER - 1' INFILL
6" = 1'-0"



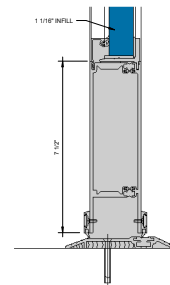
④ BOTTOM RAIL - 1' INFILL
6" = 1'-0"



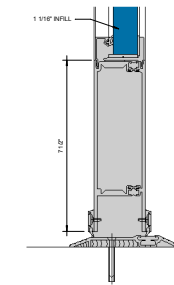
⑤ BOTTOM RAIL - 1' INFILL
6" = 1'-0"



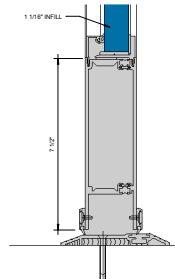
⑥ BOTTOM RAIL - 1' INFILL
6" = 1'-0"



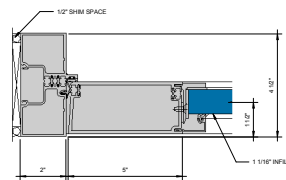
⑦ OPTIONAL BOTTOM RAIL - 1' INFILL
6" = 1'-0"



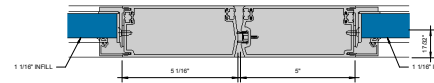
⑧ OPTIONAL BOTTOM RAIL - 1' INFILL
6" = 1'-0"



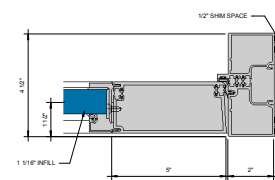
⑨ OPTIONAL BOTTOM RAIL - 1' INFILL
6" = 1'-0"



⑩ LOCK/HINGE STILE - 1' INFILL
6" = 1'-0"



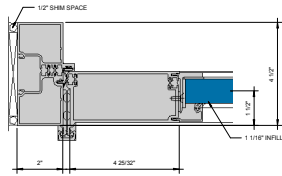
⑪ MEETING STILE - 1' INFILL
6" = 1'-0"



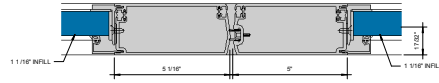
⑫ LOCK/HINGE STILE - 1' INFILL
6" = 1'-0"

KAWNEER AN ARCONIC COMPANY

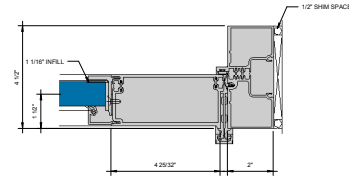
555 Guthridge Ct.
Technology Park/Atlanta
Norcross, GA 30092 USA
Tel: +1 770 449 5555



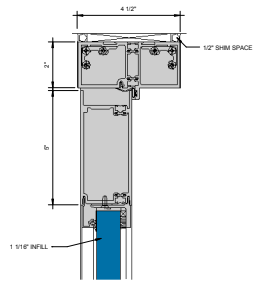
① CGH STILE-1\"/>



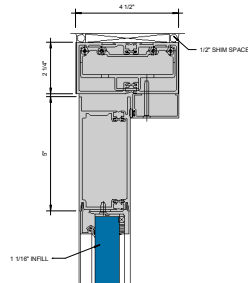
② MEETING STILE-1\"/>



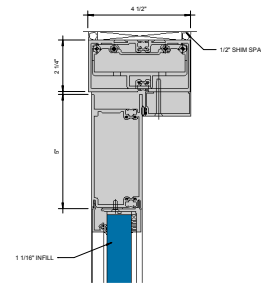
③ CGH STILE-1\"/>



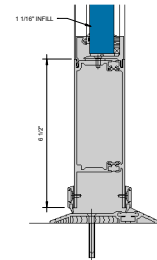
① DOOR HEADER - 1" INFILL
6" = 1'-0"



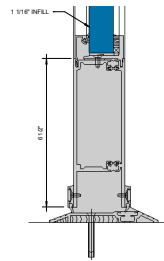
② DOOR HEADER - 1" INFILL
6" = 1'-0"



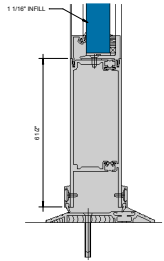
③ DOOR HEADER - 1" INFILL
6" = 1'-0"



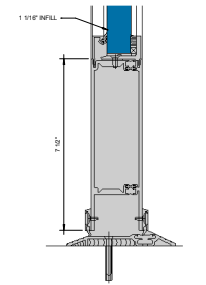
④ BOTTOM RAIL - 1" INFILL
6" = 1'-0"



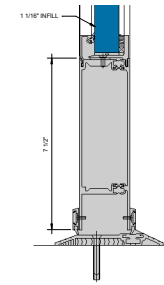
⑤ BOTTOM RAIL - 1" INFILL
6" = 1'-0"



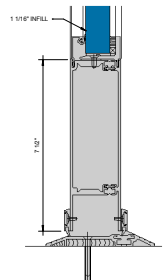
⑥ BOTTOM RAIL - 1" INFILL
6" = 1'-0"



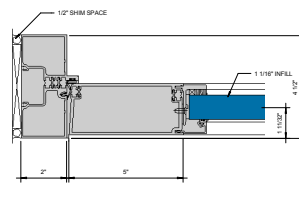
⑦ OPTIONAL BOTTOM RAIL - 1" INFILL
6" = 1'-0"



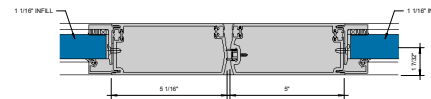
⑧ OPTIONAL BOTTOM RAIL - 1" INFILL
6" = 1'-0"



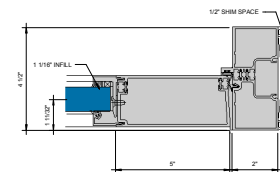
⑨ OPTIONAL BOTTOM RAIL - 1" INFILL
6" = 1'-0"



⑩ LOCKING STILE - 1" INFILL
6" = 1'-0"



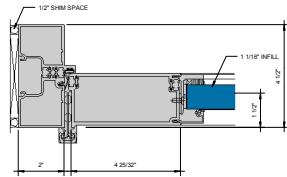
⑪ MEETING STILE - 1" INFILL
6" = 1'-0"



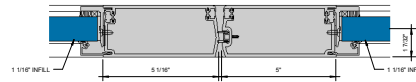
⑫ LOCKING STILE - 1" INFILL
6" = 1'-0"

KAWNEER AN ARCONIC COMPANY

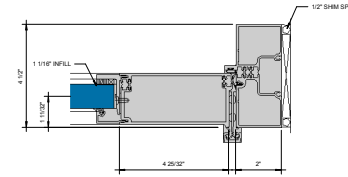
555 Guthridge Ct.
Technology Park/Atlanta
Norcross, GA 30092 USA
Tel: +1 770 449 5555



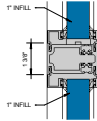
CGH STILE - 1" INFILL
6" = 1'-0"



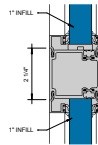
MEETING STILE - 1" INFILL
6" = 1'-0"



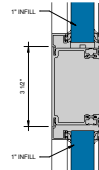
CGH STILE - 1" INFILL
6" = 1'-0"



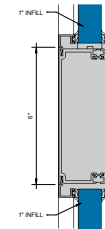
① OPTIONAL CROSS RAIL - 1" INFILL
6" = 1'-0"



② OPTIONAL CROSS RAIL - 1" INFILL
6" = 1'-0"



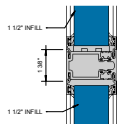
③ OPTIONAL CROSS RAIL - 1" INFILL
6" = 1'-0"



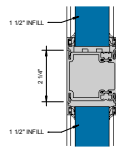
④ OPTIONAL CROSS RAIL - 1" INFILL
6" = 1'-0"



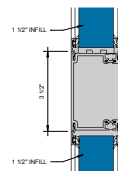
⑤ OPTIONAL CROSS RAIL - 1" INFILL
6" = 1'-0"



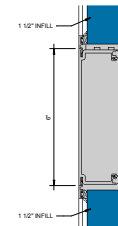
⑥ OPTIONAL CROSS RAIL DETAILS WITH
TRIPLE GLAZE - 1 1/2" INFILL
6" = 1'-0"



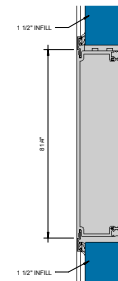
⑦ OPTIONAL CROSS RAIL DETAILS WITH
TRIPLE GLAZE - 1 1/2" INFILL
6" = 1'-0"



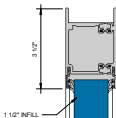
⑧ OPTIONAL CROSS RAIL DETAILS WITH
TRIPLE GLAZE - 1 1/2" INFILL
6" = 1'-0"



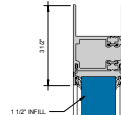
⑨ OPTIONAL CROSS RAIL DETAILS WITH
TRIPLE GLAZE - 1 1/2" INFILL
6" = 1'-0"



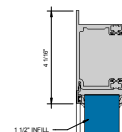
⑩ OPTIONAL CROSS RAIL DETAILS WITH
TRIPLE GLAZE - 1 1/2" INFILL
6" = 1'-0"



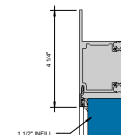
⑪ OPTIONAL TRIPLE GLAZE DETAILS - 1 1/2"
INFILL
6" = 1'-0"



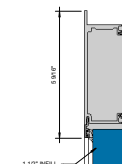
⑫ OPTIONAL TRIPLE GLAZE DETAILS - 1 1/2"
INFILL
6" = 1'-0"



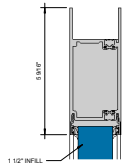
⑬ OPTIONAL TRIPLE GLAZE DETAILS - 1 1/2"
INFILL
6" = 1'-0"



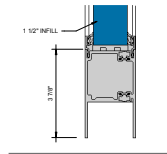
⑭ OPTIONAL TRIPLE GLAZE DETAILS - 1 1/2"
INFILL
6" = 1'-0"



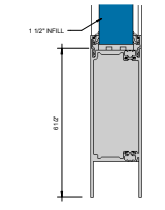
⑮ OPTIONAL TRIPLE GLAZE DETAILS - 1 1/2"
INFILL
6" = 1'-0"



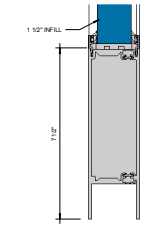
OPTIONAL TRIPLE GLAZE DETAILS-1 1/2"
① INFILL
② 6" = 1'-0"



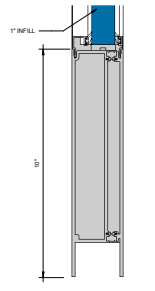
OPTIONAL TRIPLE GLAZE DETAILS-1 1/2"
① INFILL
② 6" = 1'-0"



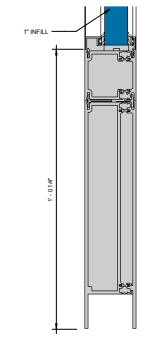
OPTIONAL TRIPLE GLAZE DETAILS-1 1/2"
① INFILL
② 6" = 1'-0"



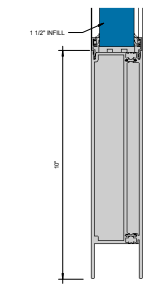
OPTIONAL TRIPLE GLAZE DETAILS-1 1/2"
① INFILL
② 6" = 1'-0"



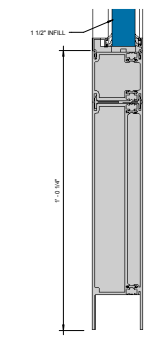
OPTIONAL BOTTOM RAIL DETAILS
OFFSET PIVOT/BUTT HUNG/CCH-1"
① INFILL
② 6" = 1'-0"



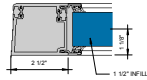
OPTIONAL BOTTOM RAIL DETAILS
OFFSET PIVOT/BUTT HUNG/CCH-1"
① INFILL
② 6" = 1'-0"



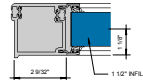
OPTIONAL BOTTOM RAIL DETAILS
OFFSET PIVOT/BUTT HUNG/CCH WITH
TRIPLE GLAZE-1 1/2" INFILL
① INFILL
② 6" = 1'-0"



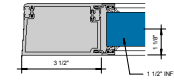
OPTIONAL BOTTOM RAIL DETAILS
OFFSET PIVOT/BUTT HUNG/CCH WITH
TRIPLE GLAZE-1 1/2" INFILL
① INFILL
② 6" = 1'-0"



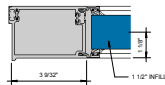
OPTIONAL TRIPLE GLAZE DETAILS-1 1/2"
① INFILL
6" = 1'-0"



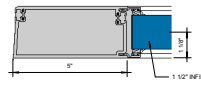
OPTIONAL TRIPLE GLAZE DETAILS-1 1/2"
① INFILL
6" = 1'-0"



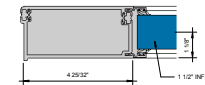
OPTIONAL TRIPLE GLAZE DETAILS-1 1/2"
① INFILL
6" = 1'-0"



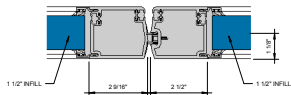
OPTIONAL TRIPLE GLAZE DETAILS-1 1/2"
① INFILL
6" = 1'-0"



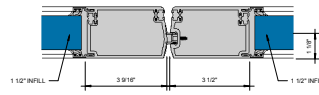
OPTIONAL TRIPLE GLAZE DETAILS-1 1/2"
① INFILL
6" = 1'-0"



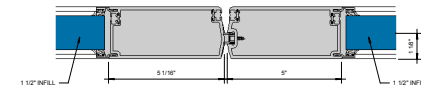
OPTIONAL TRIPLE GLAZE DETAILS-1 1/2"
① INFILL
6" = 1'-0"



OPTIONAL TRIPLE GLAZE DETAILS-1 1/2"
① INFILL
6" = 1'-0"



OPTIONAL TRIPLE GLAZE DETAILS-1 1/2"
① INFILL
6" = 1'-0"



OPTIONAL TRIPLE GLAZE DETAILS-1 1/2"
① INFILL
6" = 1'-0"